

anti- TRX antibody

Product Information

Catalog No.:	CAF50365
Size:	100µg
Form:	liquid
Purification:	Immunogen affinity purified
Purity:	≥95% as determined by SDS-PAGE
Host:	Rabbit
Clonality:	polyclonal
Clone ID:	None
IsoType:	IgG
Storage:	PBS with 0.02% sodium azide and 50% glycerol pH 7.3, -20°C for 12 months (Avoid repeated freeze / thaw cycles.)

Background

The protein encoded by this gene acts as a homodimer and is involved in many redox reactions. The encoded protein is active in the reversible S-nitrosylation of cysteines in certain proteins, which is part of the response to intracellular nitric oxide. This protein is found in the cytoplasm. Two transcript variants encoding different isoforms have been found for this gene.

Immunogen information

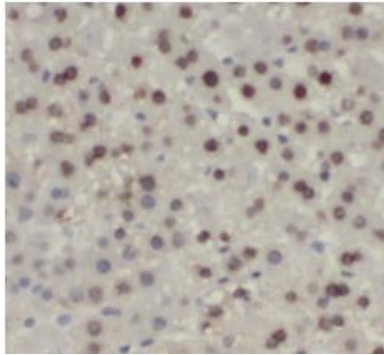
Immunogen:	thioredoxin
Synonyms:	ADF, ATL derived factor, DKFZp686B1993, SASP, Thioredoxin, TRDX, TRX, TRX1, TXN
Observed MW:	Refer to Figures
Uniprot ID :	P10599

Application

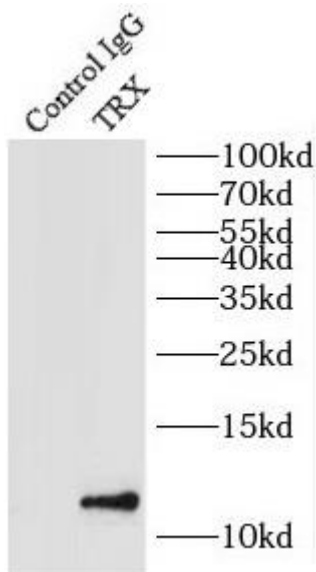
Reactivity:	Human, Mouse
Tested Application:	ELISA, WB, IHC, IP
Recommended dilution:	WB: 1:500 - 1:2000; IHC: 1:50 - 1:200; IP : 1:20 - 1:50
Image:	

This Antibody is for Research Use Only. Not for Diagnostic Procedures.

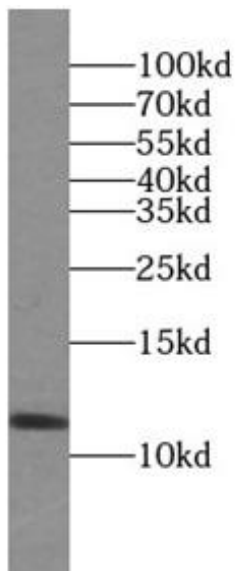
This is a sample Antibody manual only. Always refer to the hard copy manual included in the Antibody for your experiment.



Immunohistochemistry of paraffin-embedded human liver slide using CAF50365(TXN Antibody) at dilution of 1:200



IP Result of anti-Thioredoxin (IP:CAF50365, 4ug; Detection:CAF50365 1:300) with Jurkat cells lysate 2000ug.



Jurkat cells were subjected to SDS PAGE followed by western blot with CAF50365(TXN Antibody) at dilution of 1:1000

This Antibody is for Research Use Only. Not for Diagnostic Procedures.

This is a sample Antibody manual only. Always refer to the hard copy manual included in the Antibody for your experiment.