

anti- VEGF antibody

Product Information

Catalog No.:	CAF50370
Size:	100µg
Form:	liquid
Purification:	Immunogen affinity purified
Purity:	≥95% as determined by SDS-PAGE
Host:	Rabbit
Clonality:	polyclonal
Clone ID:	None
IsoType:	IgG
Storage:	PBS with 0.02% sodium azide and 50% glycerol pH 7.3, -20°C for 12 months (Avoid repeated freeze / thaw cycles.)

Background

VEGFA, also named as VEGF or VPF, belongs to the PDGF/VEGF growth factor family. It is a growth factor active in angiogenesis, vasculogenesis and endothelial cell growth. VEGFA induces endothelial cell proliferation, promotes cell migration, inhibits apoptosis and induces permeabilization of blood vessels. It binds to the FLT1/VEGFR1 and KDR/VEGFR2 receptors, heparan sulfate and heparin. Defects in VEGFA are a cause of susceptibility to microvascular complications of diabetes type 1(MVCD1). VEGFA has 13 isoforms with MW 16kd to 45kd. Some isoforms has homodimer form, such as VEGFA189(38kd), VEGFA110(34kd). VEGFA is a 34kd to 42kd, dimeric, disulfide-bound glycoprotein. VEGF-A exists in at least seven homodimeric isoforms. The monomers consist of 121, 145, 148, 165, 183, 189, or 206 amino acids(PMID:15602010).

Immunogen information

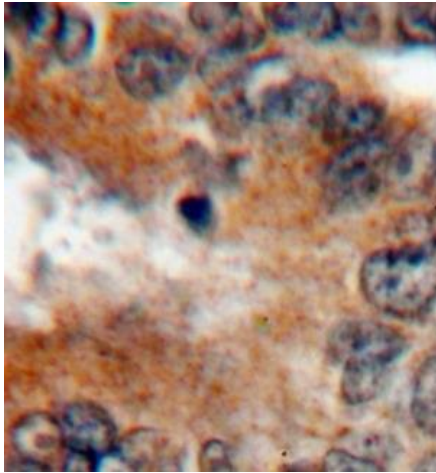
Immunogen:	vascular endothelial growth factor A
Synonyms:	L VEGFA, MVCD1, Vascular permeability factor, VEGF, VEGF A, VEGFA, VPF
Observed MW:	15-27kDa, 34-45kDa
Uniprot ID :	P15692

Application

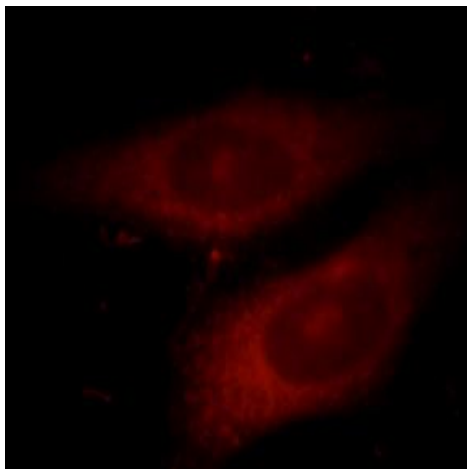
Reactivity:	Human, Mouse, Rat
Tested Application:	ELISA, IHC, IF, WB
Recommended dilution:	WB: 1:200-1:2000; IF: 1:10-1:100; IHC: 1:50-1:500
Image:	

This Antibody is for Research Use Only. Not for Diagnostic Procedures.

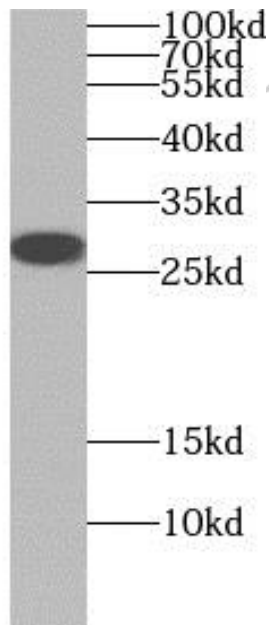
This is a sample Antibody manual only. Always refer to the hard copy manual included in the Antibody for your experiment.



Immunohistochemistry of paraffin-embedded human lung cancer tissue slide using CAF50370(VEGFA Antibody) at dilution of 1:200



Immunofluorescent analysis of HepG2 cells, using VEGFA antibody (CAF50370) at 1:25 dilution and Rhodamine-labeled goat anti-rabbit IgG (red).



PC-3 cells were subjected to SDS PAGE followed by western blot with CAF50370(VEGFA antibody) at dilution of 1:800

This Antibody is for Research Use Only. Not for Diagnostic Procedures.

This is a sample Antibody manual only. Always refer to the hard copy manual included in the Antibody for your experiment.