

anti- YAP1 antibody

Product Information

Catalog No.:	CAF50375
Size:	100µg
Form:	liquid
Purification:	Immunogen affinity purified
Purity:	≥95% as determined by SDS-PAGE
Host:	Rabbit
Clonality:	polyclonal
Clone ID:	None
IsoType:	IgG
Storage:	PBS with 0.02% sodium azide and 50% glycerol pH 7.3, -20°C for 12 months (Avoid repeated freeze / thaw cycles.)

Background

This gene encodes a downstream nuclear effector of the Hippo signaling pathway which is involved in development, growth, repair, and homeostasis. This gene is known to play a role in the development and progression of multiple cancers as a transcriptional regulator of this signaling pathway and may function as a potential target for cancer treatment. Alternative splicing results in multiple transcript variants encoding different isoforms.

Immunogen information

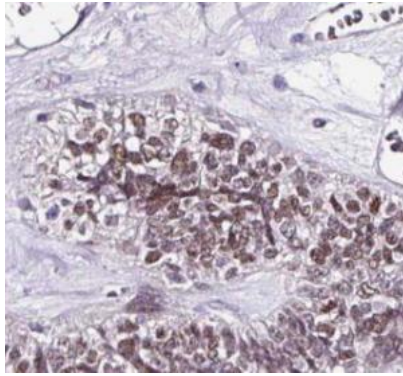
Immunogen:	Yes-associated protein 1, 65kDa
Synonyms:	65 kDa Yes associated protein, YAP, YAP1, YAP2, YAP65, YKI, Yorkie homolog
Observed MW:	70 kDa
Uniprot ID :	P46937

Application

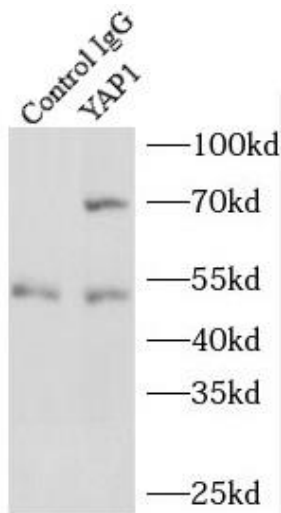
Reactivity:	Human, Mouse
Tested Application:	ELISA, WB, IHC, IF, IP
Recommended dilution:	WB: 1:500 - 1:2000; IHC: 1:50 - 1:200; IF: 1:50 - 1:200; IP: 1:20 - 1:50
Image:	

This Antibody is for Research Use Only. Not for Diagnostic Procedures.

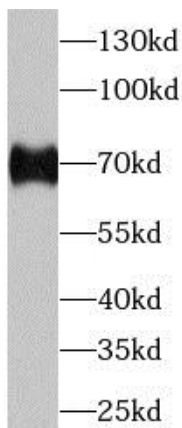
This is a sample Antibody manual only. Always refer to the hard copy manual included in the Antibody for your experiment.



Immunohistochemistry of paraffin-embedded human ovary tumor using CAF50375(YAP1 antibody) at dilution of 1:100



IP Result of anti-YAP1 (IP:CAF50375, 3ug; Detection:CAF50375 1:700) with NIH/3T3 cells lysate 1200ug.



HeLa cells were subjected to SDS PAGE followed by western blot with CAF50375(YAP1 Antibody) at dilution of 1:1000

This Antibody is for Research Use Only. Not for Diagnostic Procedures.

This is a sample Antibody manual only. Always refer to the hard copy manual included in the Antibody for your experiment.