

anti- β -ENaC antibody

Product Information

Catalog No.:	CAF50378
Size:	100 μ g
Form:	liquid
Purification:	Immunogen affinity purified
Purity:	\geq 95% as determined by SDS-PAGE
Host:	Rabbit
Clonality:	polyclonal
Clone ID:	None
IsoType:	IgG
Storage:	PBS with 0.02% sodium azide and 50% glycerol pH 7.3, -20 $^{\circ}$ C for 12 months (Avoid repeated freeze / thaw cycles.)

Background

SCNN1B, also named as SCNEB, ENaCB, Beta-NaCH and Beta-ENaC, belongs to the amiloride-sensitive sodium channel(TC 1.A.6) family and SCNN1B subfamily. Sodium permeable non-voltage-sensitive ion channel is inhibited by the diuretic amiloride. SCNN1B mediates the electrodiffusion of the luminal sodium(and water, which follows osmotically) through the apical membrane of epithelial cells. It controls the reabsorption of sodium in kidney, colon, lung and sweat glands. SCNN1B plays a role in taste perception.

Immunogen information

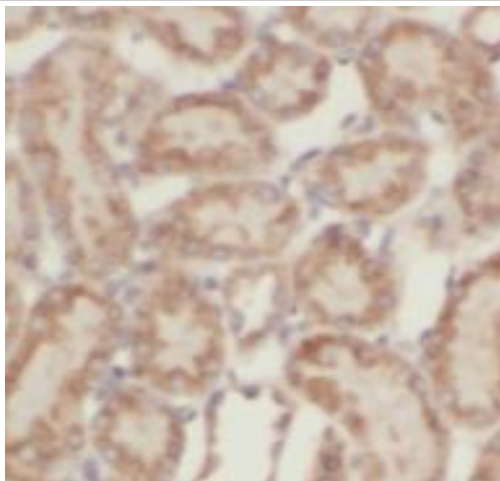
Immunogen:	sodium channel, nonvoltage-gated 1, beta
Synonyms:	Beta ENaC, Beta NaCH, ENaCb, ENaCbeta, SCNEB, SCNN1B, β ENaC, β ENaC
Observed MW:	78 kDa
UniprotID :	P51168

Application

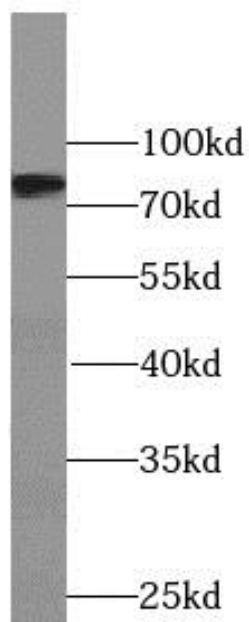
Reactivity:	Human, Mouse, Rat
Tested Application:	ELISA, WB, IHC
Recommended dilution:WB:	1:200-1:2000; IHC: 1:20-1:200
Image:	

This Antibody is for Research Use Only. Not for Diagnostic Procedures.

This is a sample Antibody manual only. Always refer to the hard copy manual included in the Antibody for your experiment.



Immunohistochemistry of paraffin-embedded human kidney tissue slide using CAF50378(β -ENaC Antibody) at dilution of 1:200



PC-3 cells were subjected to SDS PAGE followed by western blot with CAF50378(β -ENaC antibody) at dilution of 1:500

This Antibody is for Research Use Only. Not for Diagnostic Procedures.

This is a sample Antibody manual only. Always refer to the hard copy manual included in the Antibody for your experiment.