

anti- MEKK3 antibody

Product Information

| | |
|---------------|---|
| Catalog No.: | CAF50385 |
| Size: | 100µg |
| Form: | liquid |
| Purification: | Immunogen affinity purified |
| Purity: | ≥95% as determined by SDS-PAGE |
| Host: | Rabbit |
| Clonality: | polyclonal |
| Clone ID: | None |
| IsoType: | IgG |
| Storage: | PBS with 0.02% sodium azide and 50% glycerol pH 7.3, -20°C for 12 months (Avoid repeated freeze / thaw cycles.) |

Background

Component of a protein kinase signal transduction cascade. Mediates activation of the NF-kappa-B, AP1 and DDIT3 transcriptional regulators.

Immunogen information

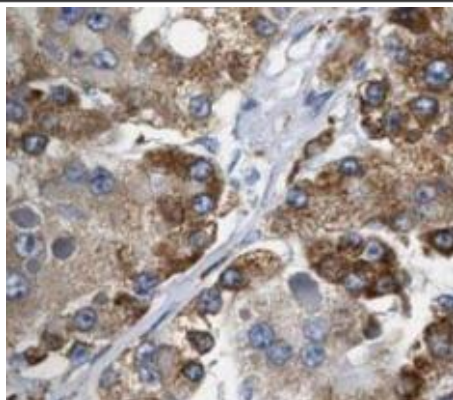
| | |
|--------------|--|
| Immunogen: | MEKK3 |
| Synonyms: | MAP3K3, MAPK/ERK kinase kinase 3, MAPKKK3, MEK kinase 3, MEKK 3, MEKK3 |
| Observed MW: | 74 kDa |
| Uniprot ID : | Q99759 |

Application

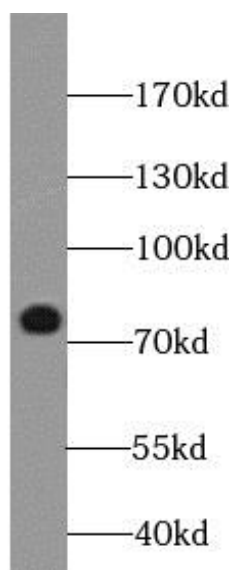
| | |
|-----------------------|-----------------------------------|
| Reactivity: | Human |
| Tested Application: | ELISA, WB, IHC |
| Recommended dilution: | WB: 1:200-1:1000; IHC: 1:50-1:500 |
| Image: | |

This Antibody is for Research Use Only. Not for Diagnostic Procedures.

This is a sample Antibody manual only. Always refer to the hard copy manual included in the Antibody for your experiment.



Immunohistochemistry of paraffin-embedded human liver cancer tissue slide using CAF50385(MEKK3 antibody) at dilution of 1:200



mouse liver tissue were subjected to SDS PAGE followed by western blot with CAF50385(MEKK3 antibody) at dilution of 1:300

SAMPLE

ONLY

This Antibody is for Research Use Only. Not for Diagnostic Procedures.

This is a sample Antibody manual only. Always refer to the hard copy manual included in the Antibody for your experiment.