

## anti- GOT1 antibody

### Product Information

Catalog No.:	CAF50391
Size:	100µg
Form:	liquid
Purification:	Immunogen affinity purified
Purity:	≥95% as determined by SDS-PAGE
Host:	Rabbit
Clonality:	polyclonal
Clone ID:	None
IsoType:	IgG
Storage:	PBS with 0.02% sodium azide and 50% glycerol pH 7.3, -20°C for 12 months (Avoid repeated freeze / thaw cycles.)

### Background

Biosynthesis of L-glutamate from L-aspartate or L-cysteine. Important regulator of levels of glutamate, the major excitatory neurotransmitter of the vertebrate central nervous system. Acts as a scavenger of glutamate in brain neuroprotection. The aspartate aminotransferase activity is involved in hepatic glucose synthesis during development and in adipocyte glyceroneogenesis. Using L-cysteine as substrate, regulates levels of mercaptopyruvate, an important source of hydrogen sulfide. Mercaptopyruvate is converted into H(2)S via the action of 3-mercaptopyruvate sulfurtransferase(3MST). Hydrogen sulfide is an important synaptic modulator and neuroprotectant in the brain.

### Immunogen information

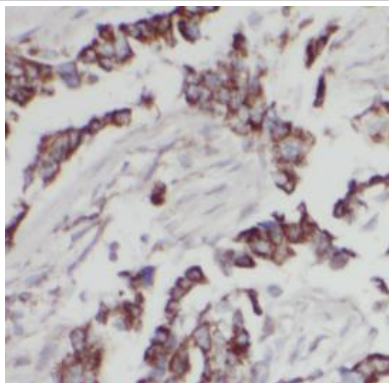
Immunogen:	glutamic-oxaloacetic transaminase 1, soluble(aspartate aminotransferase 1)
Synonyms:	AATC, CAT, GIG18, GOT1, Transaminase A
Observed MW:	43-46 kDa
Uniprot ID :	P17174

### Application

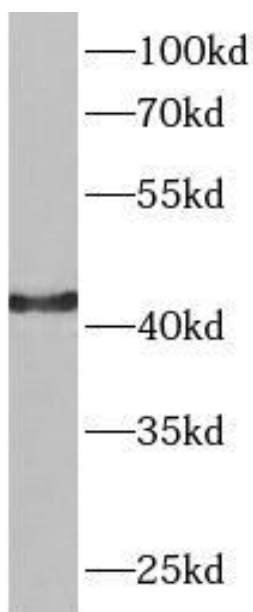
Reactivity:	Human, Mouse, Rat
Tested Application:	ELISA, IHC, IF, WB
Recommended dilution:	WB: 1:500-1:2000; IHC: 1:50-1:200; IF: 1:10-1:100
Image:	

**This Antibody is for Research Use Only. Not for Diagnostic Procedures.**

This is a sample Antibody manual only. Always refer to the hard copy manual included in the Antibody for your experiment.



Immunohistochemistry of paraffin-embedded human lung cancer using CAF50391(GOT1 antibody) at dilution of 1:100



HeLa cells were subjected to SDS PAGE followed by western blot with CAF50391(GOT1 antibody) at dilution of 1:1000

ONLY

SAMPLE

**This Antibody is for Research Use Only. Not for Diagnostic Procedures.**

This is a sample Antibody manual only. Always refer to the hard copy manual included in the Antibody for your experiment.