

anti- ZEB2 antibody

Product Information

Catalog No.:	CAF50409
Size:	100µg
Form:	liquid
Purification:	Immunogen affinity purified
Purity:	≥95% as determined by SDS-PAGE
Host:	Rabbit
Clonality:	polyclonal
Clone ID:	None
IsoType:	IgG
Storage:	PBS with 0.02% sodium azide and 50% glycerol pH 7.3, -20°C for 12 months (Avoid repeated freeze / thaw cycles.)

Immunogen information

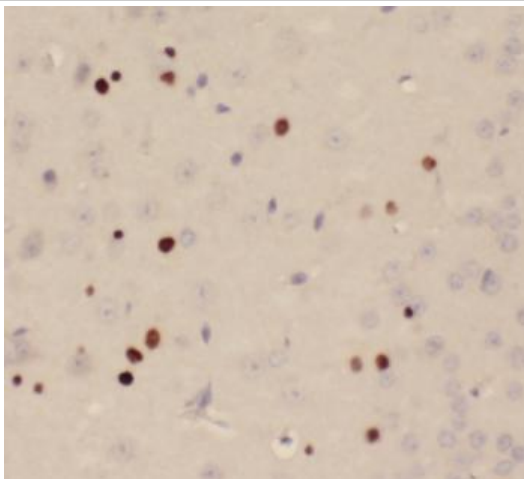
Immunogen:	zinc finger E-box binding homeobox 2
Synonyms:	KIAA0569, SIP 1, SIP1, Smad interacting protein 1, SMADIP1, ZEB2, ZFHX1B, ZFX1B
Observed MW:	136 kDa
Uniprot ID :	O60315

Application

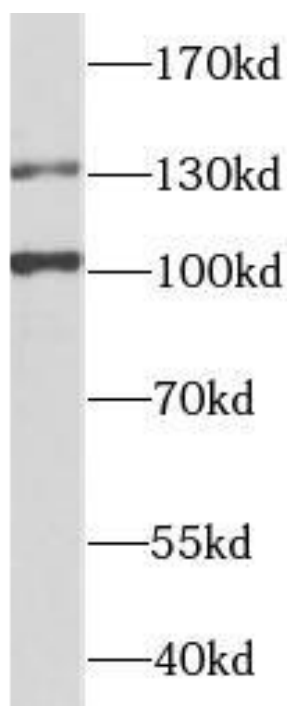
Reactivity:	Human, Mouse, Rat
Tested Application:	ELISA, WB, IHC, IF
Recommended dilution:	WB: 1:500-1:2000; IHC: 1:20-1:200; IF: 1:10-1:100
Image:	

This Antibody is for Research Use Only. Not for Diagnostic Procedures.

This is a sample Antibody manual only. Always refer to the hard copy manual included in the Antibody for your experiment.



Immunohistochemistry of paraffin-embedded rat brain tissue slide using CAF50409(ZEB2 Antibody) at dilution of 1:100



HepG2 cells were subjected to SDS PAGE followed by western blot with CAF50409(ZEB2 Antibody) at dilution of 1:1000

This Antibody is for Research Use Only. Not for Diagnostic Procedures.

This is a sample Antibody manual only. Always refer to the hard copy manual included in the Antibody for your experiment.