

anti- TAB2 antibody

Product Information

Catalog No.:	CAF50417
Size:	100µg
Form:	liquid
Purification:	Immunogen affinity purified
Purity:	≥95% as determined by SDS-PAGE
Host:	Rabbit
Clonality:	polyclonal
Clone ID:	None
IsoType:	IgG
Storage:	PBS with 0.02% sodium azide and 50% glycerol pH 7.3, -20°C for 12 months (Avoid repeated freeze / thaw cycles.)

Background

Adapter linking MAP3K7/TAK1 and TRAF6. Promotes MAP3K7 activation in the IL1 signaling pathway. The binding of 'Lys-63'-linked polyubiquitin chains to TAB2 promotes autophosphorylation of MAP3K7 at 'Thr-187'. Involved in heart development.

Immunogen information

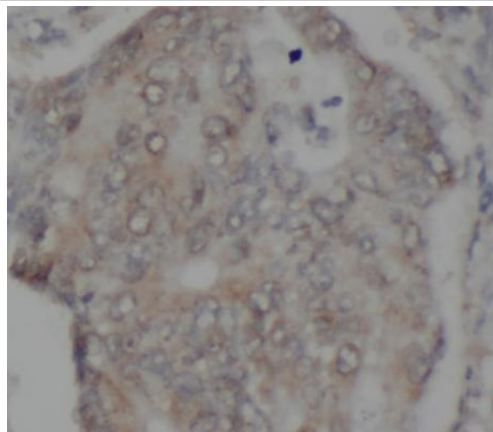
Immunogen:	mitogen-activated protein kinase kinase kinase 7 interacting protein 2
Synonyms:	KIAA0733, MAP3K7IP2
Observed MW:	77 kDa
Uniprot ID :	Q9NYJ8

Application

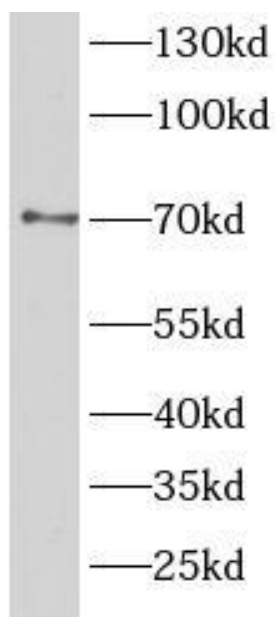
Reactivity:	Human, Rat
Tested Application:	ELISA, IHC, WB
Recommended dilution:	WB: 1:500-1:2000; IHC: 1:50-1:500
Image:	

This Antibody is for Research Use Only. Not for Diagnostic Procedures.

This is a sample Antibody manual only. Always refer to the hard copy manual included in the Antibody for your experiment.



Immunohistochemistry of paraffin-embedded human intestinal cancer using CAF50417(TAB2 antibody) at dilution of 1:100



HeLa cells were subjected to SDS PAGE followed by western blot with CAF50417(TAB2 Antibody) at dilution of 1:1000