

## anti- DBH antibody

### Product Information

Catalog No.:	CAF50419
Size:	100µg
Form:	liquid
Purification:	Immunogen affinity purified
Purity:	≥95% as determined by SDS-PAGE
Host:	Rabbit
Clonality:	polyclonal
Clone ID:	None
IsoType:	IgG
Storage:	PBS with 0.02% sodium azide and 50% glycerol pH 7.3, -20°C for 12 months (Avoid repeated freeze / thaw cycles.)

### Background

The protein encoded by this gene is an oxidoreductase belonging to the copper type II, ascorbate-dependent monooxygenase family. It is present in the synaptic vesicles of postganglionic sympathetic neurons and converts dopamine to norepinephrine. It exists in both soluble and membrane-bound forms, depending on the absence or presence, respectively, of a signal peptide.

### Immunogen information

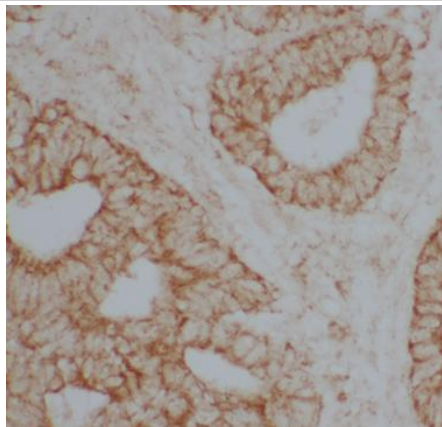
Immunogen:	dopamine beta-hydroxylase(dopamine beta-monoxygenase)
Synonyms:	DBH, Dopamine beta Hydroxylase, Dopamine beta monoxygenase
Observed MW:	63 kDa
Uniprot ID :	P09172

### Application

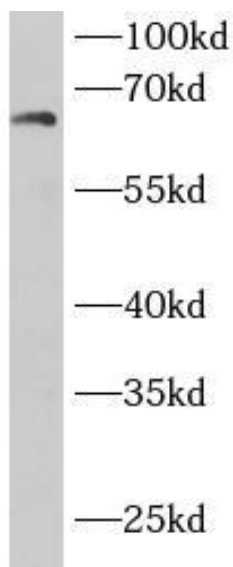
Reactivity:	Human
Tested Application:	ELISA, WB, IHC
Recommended dilution:	WB: 1:500-1:2000; IHC: 1:20-1:500
Image:	

**This Antibody is for Research Use Only. Not for Diagnostic Procedures.**

This is a sample Antibody manual only. Always refer to the hard copy manual included in the Antibody for your experiment.



Immunohistochemistry of paraffin-embedded human intestinal cancer tissue slide using CAF50419(DBH antibody) at dilution of 1:200



Hela cells were subjected to SDS PAGE followed by western blot with CAF50419(DBH antibody) at dilution of 1:1000