

## anti- STAT1 antibody

### Product Information

Catalog No.:	CAF50422
Size:	100µg
Form:	liquid
Purification:	Immunogen affinity purified
Purity:	≥95% as determined by SDS-PAGE
Host:	Rabbit
Clonality:	polyclonal
Clone ID:	None
IsoType:	IgG
Storage:	PBS with 0.02% sodium azide and 50% glycerol pH 7.3, -20°C for 12 months (Avoid repeated freeze / thaw cycles.)

### Background

Signal transducer and transcription activator that mediates cellular responses to interferons (IFNs), cytokine KITLG/SCF and other cytokines and other growth factors. Following type I IFN (IFN- $\alpha$  and IFN- $\beta$ ) binding to cell surface receptors, signaling via protein kinases leads to activation of Jak kinases (TYK2 and JAK1) and to tyrosine phosphorylation of STAT1 and STAT2. The phosphorylated STATs dimerize and associate with ISGF3G/IRF-9 to form a complex termed ISGF3 transcription factor, that enters the nucleus. ISGF3 binds to the IFN stimulated response element (ISRE) to activate the transcription of IFN-stimulated genes (ISG), which drive the cell in an antiviral state. In response to type II IFN (IFN- $\gamma$ ), STAT1 is tyrosine- and serine-phosphorylated. It then forms a homodimer termed IFN- $\gamma$ -activated factor (GAF), migrates into the nucleus and binds to the IFN  $\gamma$  activated sequence (GAS) to drive the expression of the target genes, inducing a cellular antiviral state. Becomes activated in response to KITLG/SCF and KIT signaling. May mediate cellular responses to activated FGFR1, FGFR2, FGFR3 and FGFR4.

### Immunogen information

Immunogen:	signal transducer and activator of transcription 1, 91kDa
Synonyms:	ISGF 3, STAT1, STAT91
Observed MW:	84 kDa
Uniprot ID :	P42224

### Application

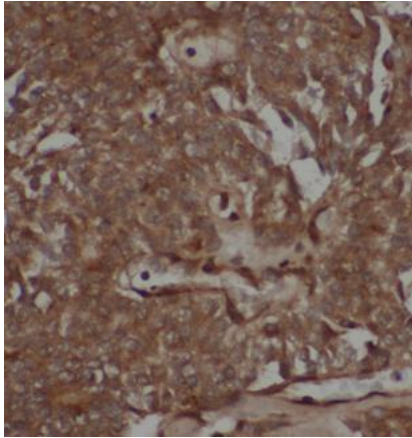
Reactivity:	Human, Rat
Tested Application:	ELISA, WB, IHC

**This Antibody is for Research Use Only. Not for Diagnostic Procedures.**

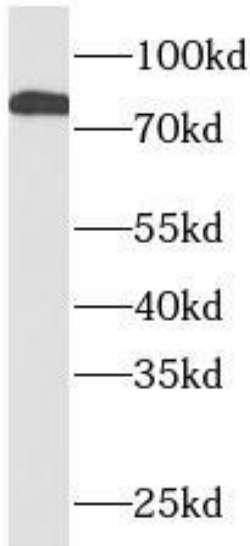
This is a sample Antibody manual only. Always refer to the hard copy manual included in the Antibody for your experiment.

Recommended dilution: WB: 1:500-1:2000; IHC: 1:50-1:500

Image:



Immunohistochemistry of paraffin-embedded human breast cancer tissue slide using CAF50422(STAT1 Antibody) at dilution of 1:200



Rat liver tissue were subjected to SDS PAGE followed by western blot with CAF50422(STAT1 antibody) at dilution of 1:1000

**This Antibody is for Research Use Only. Not for Diagnostic Procedures.**

This is a sample Antibody manual only. Always refer to the hard copy manual included in the Antibody for your experiment.