

anti- MSX1 antibody

Product Information

Catalog No.:	CAF50428
Size:	100µg
Form:	liquid
Purification:	Immunogen affinity purified
Purity:	≥95% as determined by SDS-PAGE
Host:	Rabbit
Clonality:	polyclonal
Clone ID:	None
IsoType:	IgG
Storage:	PBS with 0.02% sodium azide and 50% glycerol pH 7.3, -20°C for 12 months (Avoid repeated freeze / thaw cycles.)

Immunogen information

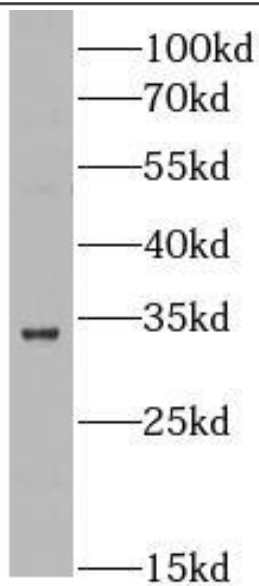
Immunogen:	msh homeobox 1
Synonyms:	Homeobox protein Hox 7, Homeobox protein MSX 1, HOX7, HYD1, msh homeobox 1, Msh homeobox 1 like protein, MSX1
Observed MW:	32 kDa
Uniprot ID :	P28360

Application

Reactivity:	Human, Rat
Tested Application:	ELISA, WB, IHC
Recommended dilution:	WB: 1:500-1:2000; IHC: 1:50-1:500
Image:	

This Antibody is for Research Use Only. Not for Diagnostic Procedures.

This is a sample Antibody manual only. Always refer to the hard copy manual included in the Antibody for your experiment.



Rat kidney were subjected to SDS PAGE followed by western blot with CAF50428(MSX1 antibody) at dilution of 1:1000

ONLY

SAMPLE

This Antibody is for Research Use Only. Not for Diagnostic Procedures.

This is a sample Antibody manual only. Always refer to the hard copy manual included in the Antibody for your experiment.