

anti- PINK1 antibody

Product Information

Catalog No.:	CAF50429
Size:	100µg
Form:	liquid
Purification:	Immunogen affinity purified
Purity:	≥95% as determined by SDS-PAGE
Host:	Rabbit
Clonality:	polyclonal
Clone ID:	None
IsoType:	IgG
Storage:	PBS with 0.02% sodium azide and 50% glycerol pH 7.3, -20°C for 12 months (Avoid repeated freeze / thaw cycles.)

Background

This gene encodes a serine/threonine protein kinase that localizes to mitochondria. It is thought to protect cells from stress-induced mitochondrial dysfunction. Mutations in this gene cause one form of autosomal recessive early-onset Parkinson disease.

Immunogen information

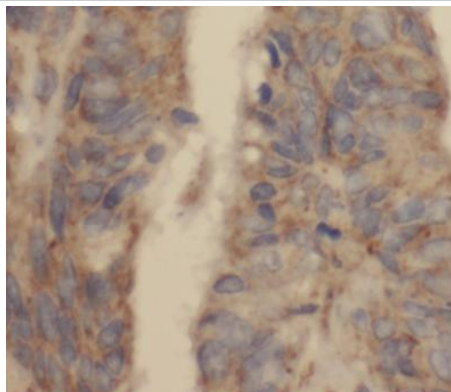
Immunogen:	PINK1
Synonyms:	BRPK, PARK6, PINK1, PTEN induced putative kinase 1
Observed MW:	30 kDa
Uniprot ID :	Q9BXM7

Application

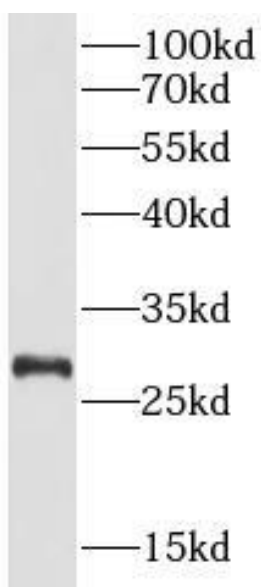
Reactivity:	Human
Tested Application:	ELISA, WB, IHC
Recommended dilution:	WB: 1:500-1:2000; IHC: 1:50-1:500
Image:	

This Antibody is for Research Use Only. Not for Diagnostic Procedures.

This is a sample Antibody manual only. Always refer to the hard copy manual included in the Antibody for your experiment.



Immunohistochemistry of paraffin-embedded human intestinal cancer using CAF50429(PINK1 antibody) at dilution of 1:100



Rat heart were subjected to SDS PAGE followed by western blot with CAF50429(PINK1 antibody) at dilution of 1:1000

SAMPLE

ONLY

This Antibody is for Research Use Only. Not for Diagnostic Procedures.

This is a sample Antibody manual only. Always refer to the hard copy manual included in the Antibody for your experiment.