

anti- RHD antibody

Product Information

Catalog No.:	CAF50435
Size:	100µg
Form:	liquid
Purification:	Immunogen affinity purified
Purity:	≥95% as determined by SDS-PAGE
Host:	Rabbit
Clonality:	polyclonal
Clone ID:	None
IsoType:	IgG
Storage:	PBS with 0.02% sodium azide and 50% glycerol pH 7.3, -20°C for 12 months (Avoid repeated freeze / thaw cycles.)

Immunogen information

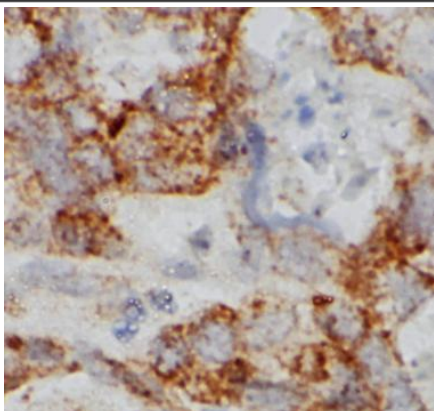
Immunogen:	Blood group Rh(D) polypeptide
Synonyms:	RHD, CD240D, DIIIc, RH, RH30, RHCED, RHDVA(TT), RHDel, RHPII, RHXIII, Rh blood group D antigen
Observed MW:	34kDa/41kDa/43kDa/45kDa/53kDa
Uniprot ID :	Q02161

Application

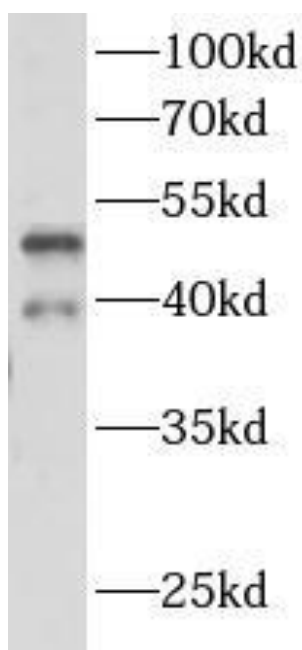
Reactivity:	Human, Mouse, Rat
Tested Application:	ELISA, WB, IHC
Recommended dilution:	WB: 1:500-1:2000; IHC: 1:50-1:500
Image:	

This Antibody is for Research Use Only. Not for Diagnostic Procedures.

This is a sample Antibody manual only. Always refer to the hard copy manual included in the Antibody for your experiment.



Immunohistochemistry of paraffin-embedded human endometrium tissue using CAF50435(RHD Antibody) at dilution of 1:200



Rat heart were subjected to SDS PAGE followed by western blot with CAF50435(RHD antibody) at dilution of 1:1000