

anti- DPOLL antibody

Product Information

Catalog No.:	CAF50437
Size:	100µg
Form:	liquid
Purification:	Immunogen affinity purified
Purity:	≥95% as determined by SDS-PAGE
Host:	Rabbit
Clonality:	polyclonal
Clone ID:	None
IsoType:	IgG
Storage:	PBS with 0.02% sodium azide and 50% glycerol pH 7.3, -20°C for 12 months (Avoid repeated freeze / thaw cycles.)

Immunogen information

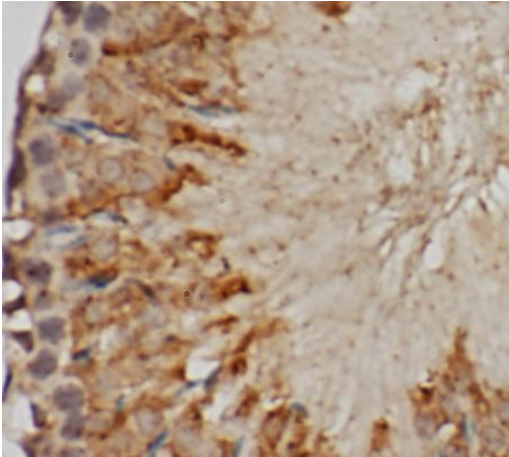
Immunogen:	DNA polymerase lambda
Synonyms:	DNA polymerase lambda, Pol Lambda, DNA polymerase beta-2, Pol beta2, DNA polymerase kappa
Observed MW:	70 kDa
Uniprot ID :	Q9UGP5

Application

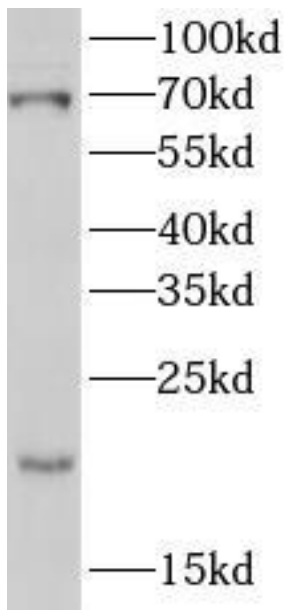
Reactivity:	Human, rat
Tested Application:	ELISA, WB, IHC
Recommended dilution:	WB: 1:500-1:2000; IHC: 1:20-1:200
Image:	

This Antibody is for Research Use Only. Not for Diagnostic Procedures.

This is a sample Antibody manual only. Always refer to the hard copy manual included in the Antibody for your experiment.



Immunohistochemistry of paraffin-embedded rat testis tissue using CAF50437(DPOLL Antibody) at dilution of 1:200



Hela cells were subjected to SDS PAGE followed by western blot with CAF50437(DPOLL antibody) at dilution of 1:1000

This Antibody is for Research Use Only. Not for Diagnostic Procedures.

This is a sample Antibody manual only. Always refer to the hard copy manual included in the Antibody for your experiment.