

## anti- HLA-DQB1 antibody

### Product Information

Catalog No.:	CAF50441
Size:	100µg
Form:	liquid
Purification:	Immunogen affinity purified
Purity:	≥95% as determined by SDS-PAGE
Host:	Rabbit
Clonality:	polyclonal
Clone ID:	None
IsoType:	IgG
Storage:	PBS with 0.02% sodium azide and 50% glycerol pH 7.3, -20°C for 12 months (Avoid repeated freeze / thaw cycles.)

### Immunogen information

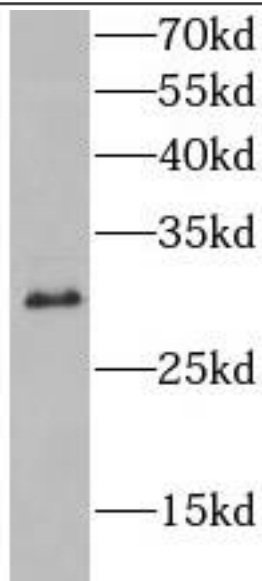
Immunogen:	major histocompatibility complex, class II, DQ beta 1
Synonyms:	HLA-DQB1, HLA DQB, MHC class II antigen DQB1, HLA class II histocompatibility antigen, DQ beta 1 chain
Observed MW:	30 kDa
Uniprot ID :	P01920

### Application

Reactivity:	Human, Mouse
Tested Application:	ELISA, WB
Recommended dilution:WB:	1:500-1:2000
Image:	

**This Antibody is for Research Use Only. Not for Diagnostic Procedures.**

This is a sample Antibody manual only. Always refer to the hard copy manual included in the Antibody for your experiment.



NIH/3T3 cells were subjected to SDS PAGE followed by western blot with CAF50441(HLA-DQB1 antibody) at dilution of 1:1000

ONLY

SAMPLE

**This Antibody is for Research Use Only. Not for Diagnostic Procedures.**

This is a sample Antibody manual only. Always refer to the hard copy manual included in the Antibody for your experiment.