

anti- BDNF antibody

Product Information

Catalog No.:	CAF50446
Size:	100µg
Form:	liquid
Purification:	Immunogen affinity purified
Purity:	≥95% as determined by SDS-PAGE
Host:	Rabbit
Clonality:	polyclonal
IsoType:	IgG
Storage:	PBS with 0.02% sodium azide and 50% glycerol pH 7.3, -20°C for 12 months (Avoid repeated freeze / thaw cycles.)

Background

During development, promotes the survival and differentiation of selected neuronal populations of the peripheral and central nervous systems. Participates in axonal growth, pathfinding and in the modulation of dendritic growth and morphology. Major regulator of synaptic transmission and plasticity at adult synapses in many regions of the CNS. The versatility of BDNF is emphasized by its contribution to a range of adaptive neuronal responses including long-term potentiation(LTP), long-term depression(LTD), certain forms of short-term synaptic plasticity, as well as homeostatic regulation of intrinsic neuronal excitability.

Immunogen information

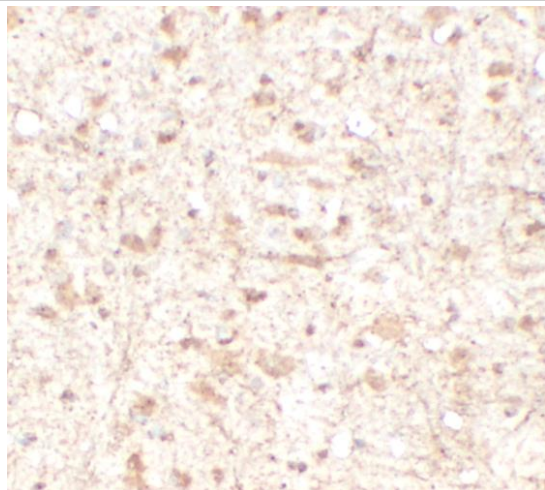
Immunogen:	brain-derived neurotrophic factor, synthetic peptide
Synonyms:	BDNF, ANON2, BULN2, brain-derived neurotrophic factor
Observed MW:	28-37 kDa, 14 kDa
Uniprot ID :	P23560

Application

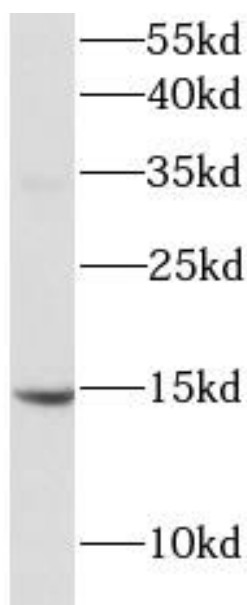
Reactivity:	Human, Mouse, Rat
Tested Application:	ELISA, WB, IHC
Recommended dilution:	WB: 1:200-1:2000; IHC: 1:50-1:500
Image:	

This Antibody is for Research Use Only. Not for Diagnostic Procedures.

This is a sample Antibody manual only. Always refer to the hard copy manual included in the Antibody for your experiment.



Immunohistochemistry of paraffin-embedded rat brain tissue slide using CAF50446(BDNF Antibody) at dilution of 1:200



A549 cells tissue were subjected to SDS PAGE followed by western blot with CAF50446(BDNF Antibody) at dilution of 1:1000

SAMPLE

This Antibody is for Research Use Only. Not for Diagnostic Procedures.

This is a sample Antibody manual only. Always refer to the hard copy manual included in the Antibody for your experiment.