

anti- WEE1 antibody

Product Information

Catalog No.:	CAF50449
Size:	100µg
Form:	liquid
Purification:	Immunogen affinity purified
Purity:	≥95% as determined by SDS-PAGE
Host:	Rabbit
Clonality:	polyclonal
Clone ID:	None
IsoType:	IgG
Storage:	PBS with 0.02% sodium azide and 50% glycerol pH 7.3, -20°C for 12 months (Avoid repeated freeze / thaw cycles.)

Immunogen information

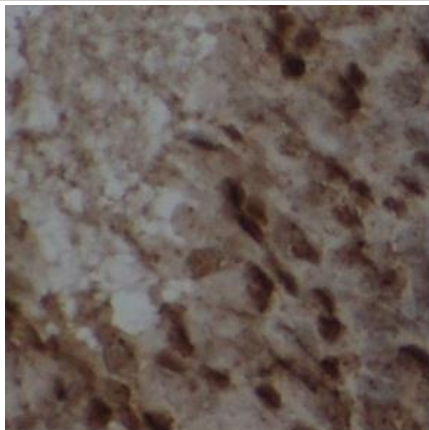
Immunogen:	WEE1 homolog
Synonyms:	WEE1, WEE1 homolog, Wee1 like protein kinase, WEE1A, Wee1A kinase, WEE1hu
Observed MW:	72 kDa
Uniprot ID :	P30291

Application

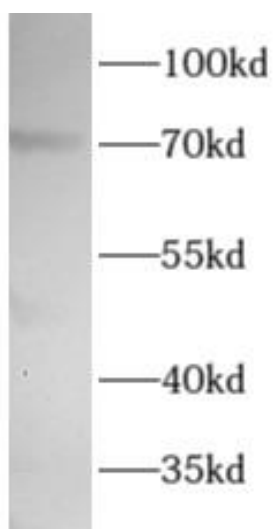
Reactivity:	Human, Rat
Tested Application:	ELISA, WB, IHC
Recommended dilution:	WB: 1:200-1:2000; IHC: 1:50-1:500
Image:	

This Antibody is for Research Use Only. Not for Diagnostic Procedures.

This is a sample Antibody manual only. Always refer to the hard copy manual included in the Antibody for your experiment.



Immunohistochemistry of paraffin-embedded rat testis tissue slide using CAF50449(WEE1 Antibody) at dilution of 1:200



Jurkat cells were subjected to SDS PAGE followed by western blot with CAF50449(WEE1 Antibody) at dilution of 1:1000