

anti- KLF2 antibody

Product Information

Catalog No.:	CAF50472
Size:	100µg
Form:	liquid
Purification:	Immunogen affinity purified
Purity:	≥95% as determined by SDS-PAGE
Host:	Rabbit
Clonality:	polyclonal
Clone ID:	None
IsoType:	IgG
Storage:	PBS with 0.02% sodium azide and 50% glycerol pH 7.3, -20°C for 12 months (Avoid repeated freeze / thaw cycles.)

Immunogen information

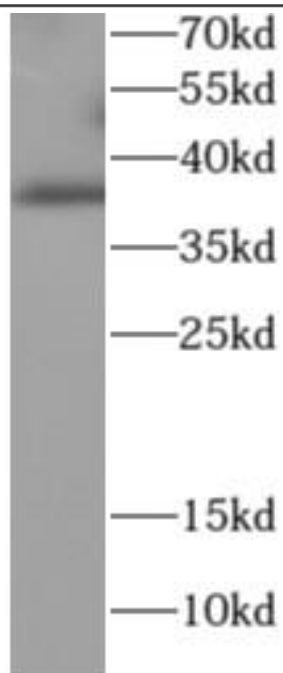
Immunogen:	Kruppel like factor 2
Synonyms:	KLF2, LKLF, Kruppel like factor 2
Observed MW:	37 kDa
Uniprot ID :	Q9Y5W3

Application

Reactivity:	Human
Tested Application:	ELISA, WB
Recommended dilution:WB:	1:200-1:2000
Image:	

This Antibody is for Research Use Only. Not for Diagnostic Procedures.

This is a sample Antibody manual only. Always refer to the hard copy manual included in the Antibody for your experiment.



U87MG cells were subjected to SDS PAGE followed by western blot with CAF50472(KLF2 antibody) at dilution of 1:1000

ONLY

SAMPLE

This Antibody is for Research Use Only. Not for Diagnostic Procedures.

This is a sample Antibody manual only. Always refer to the hard copy manual included in the Antibody for your experiment.