

anti- EML4 antibody

Product Information

Catalog No.:	CAF50479
Size:	100µg
Form:	liquid
Purification:	Immunogen affinity purified
Purity:	≥95% as determined by SDS-PAGE
Host:	Rabbit
Clonality:	polyclonal
Clone ID:	None
IsoType:	IgG
Storage:	PBS with 0.02% sodium azide and 50% glycerol pH 7.3, -20°C for 12 months (Avoid repeated freeze / thaw cycles.)

Background

May modify the assembly dynamics of microtubules, such that microtubules are slightly longer, but more dynamic.

Immunogen information

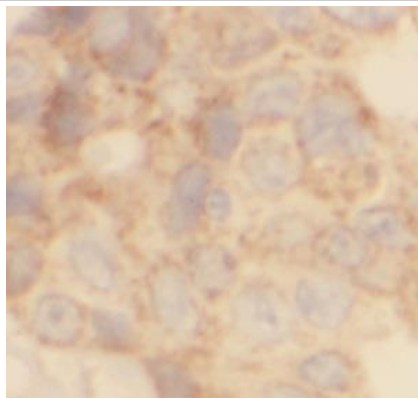
Immunogen:	echinoderm microtubule associated protein like 4
Synonyms:	C2orf2, ELP120, EMAP 4, EMAPL4, EML4, Ropp 120, ROPP120
Observed MW:	120 kDa
Uniprot ID :	Q9HC35

Application

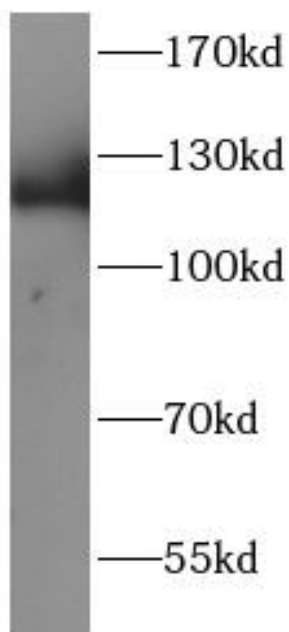
Reactivity:	Human, Rat, Mouse
Tested Application:	ELISA, WB, IHC
Recommended dilution:	WB: 1:500-1:2000; IHC: 1:50-1:500
Image:	

This Antibody is for Research Use Only. Not for Diagnostic Procedures.

This is a sample Antibody manual only. Always refer to the hard copy manual included in the Antibody for your experiment.



Immunohistochemistry of paraffin-embedded human breast cancer tissue slide using CAF50479(EML4 Antibody) at dilution of 1:200



A549 cells were subjected to SDS PAGE followed by western blot with CAF50479(EML4 antibody) at dilution of 1:1000