

## anti- ELK3 antibody

### Product Information

Catalog No.:	CAF50485
Size:	100µg
Form:	liquid
Purification:	Immunogen affinity purified
Purity:	≥95% as determined by SDS-PAGE
Host:	Rabbit
Clonality:	polyclonal
Clone ID:	None
IsoType:	IgG
Storage:	PBS with 0.02% sodium azide and 50% glycerol pH 7.3, -20°C for 12 months (Avoid repeated freeze / thaw cycles.)

### Immunogen information

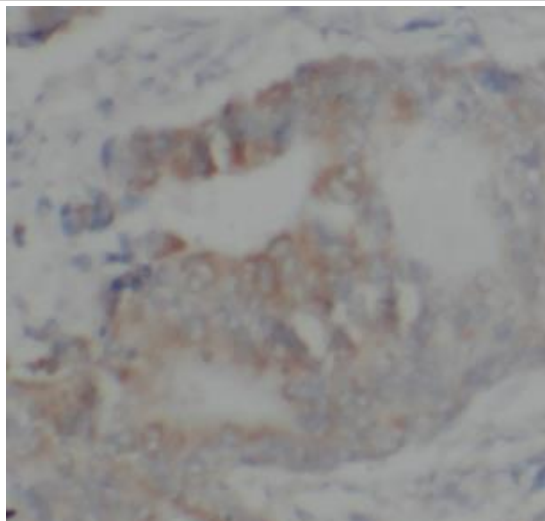
Immunogen:	ETS domain-containing protein Elk-3
Synonyms:	ETS-related protein ERP, Serum response factor accessory protein 2, SRF accessory protein 2, SAP-2, ETS-related protein NET
Observed MW:	44 kDa
Uniprot ID :	P41970

### Application

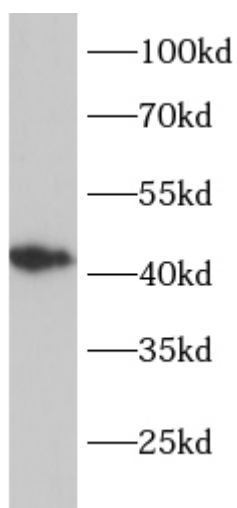
Reactivity:	Human, Rat, Mouse
Tested Application:	ELISA, WB, IHC
Recommended dilution:	WB: 1:500-1:2000; IHC: 1:50-1:500
Image:	

**This Antibody is for Research Use Only. Not for Diagnostic Procedures.**

This is a sample Antibody manual only. Always refer to the hard copy manual included in the Antibody for your experiment.



Immunohistochemical of paraffin-embedded human colon cancer using CAF50485(ELK3 antibody) at dilution of 1:100



K562 cells were subjected to SDS PAGE followed by western blot with CAF50485(ELK3 antibody) at dilution of 1:1000.

SAMPLE

**This Antibody is for Research Use Only. Not for Diagnostic Procedures.**

This is a sample Antibody manual only. Always refer to the hard copy manual included in the Antibody for your experiment.