

anti- SLC4A4 antibody

Product Information

Catalog No.:	CAF50492
Size:	100µg
Form:	liquid
Purification:	Immunogen affinity purified
Purity:	≥95% as determined by SDS-PAGE
Host:	Rabbit
Clonality:	polyclonal
Clone ID:	None
IsoType:	IgG
Storage:	PBS with 0.02% sodium azide and 50% glycerol pH 7.3, -20°C for 12 months (Avoid repeated freeze / thaw cycles.)

Background

Electrogenic sodium/bicarbonate cotransporter with a Na(+):HCO₃(-) stoichiometry varying from 1:2 to 1:3. May regulate bicarbonate influx/efflux at the basolateral membrane of cells and regulate intracellular pH. Isoform 2: May have a higher activity than isoform 1.

Immunogen information

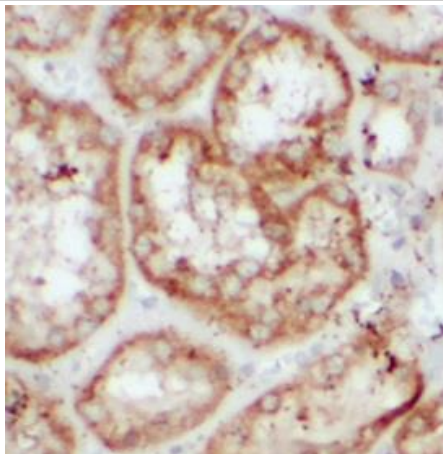
Immunogen:	solute carrier family 4, sodium bicarbonate cotransporter, member 4
Synonyms:	hhNMC, HNBC1, KNBC, kNBC1, Na(+)/HCO ₃ (-) cotransporter, NBC, NBC1, NBC2, NBCE1, pNBC, SLC4A4, SLC4A5
Observed MW:	121 kDa
Uniprot ID :	Q9Y6R1

Application

Reactivity:	Human
Tested Application:	ELISA, IHC
Recommended dilution: IHC:	1:20-1:200
Image:	

This Antibody is for Research Use Only. Not for Diagnostic Procedures.

This is a sample Antibody manual only. Always refer to the hard copy manual included in the Antibody for your experiment.



Immunohistochemistry of paraffin-embedded human kidney using CAF50492(SLC4A4 antibody) at dilution of 1:100

ONLY

SAMPLE

This Antibody is for Research Use Only. Not for Diagnostic Procedures.

This is a sample Antibody manual only. Always refer to the hard copy manual included in the Antibody for your experiment.