

anti- PMP22 antibody

Product Information

Catalog No.:	CAF50493
Size:	100µg
Form:	liquid
Purification:	Immunogen affinity purified
Purity:	≥95% as determined by SDS-PAGE
Host:	Rabbit
Clonality:	polyclonal
Clone ID:	None
IsoType:	IgG
Storage:	PBS with 0.02% sodium azide and 50% glycerol pH 7.3, -20°C for 12 months (Avoid repeated freeze / thaw cycles.)

Immunogen information

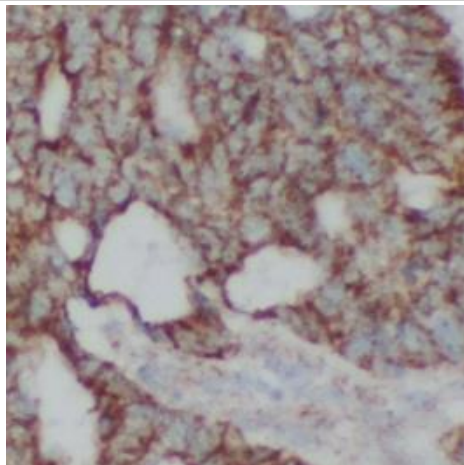
Immunogen:	peripheral myelin protein 22
Synonyms:	PMP22, CIDP, CMT1A, CMT1E, DSS, GAS-3, GAS3, HMSNIA, HNPP, Sp110, peripheral myelin protein 22
Observed MW:	22 kDa
Uniprot ID :	Q01453

Application

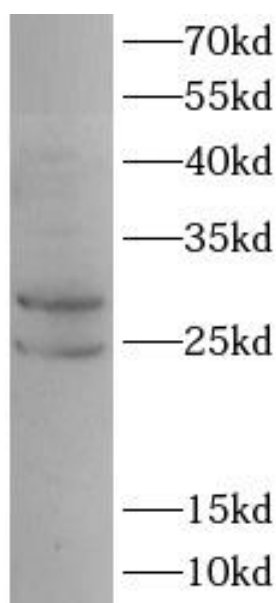
Reactivity:	Human,Rat
Tested Application:	ELISA, WB, IHC
Recommended dilution:	WB: 1:500-1:2000; IHC: 1:50-1:500
Image:	

This Antibody is for Research Use Only. Not for Diagnostic Procedures.

This is a sample Antibody manual only. Always refer to the hard copy manual included in the Antibody for your experiment.



Immunohistochemistry of paraffin-embedded human colon cancer using CAF50493(PMP22 antibody) at dilution of 1:100



PC12 cells were subjected to SDS PAGE followed by western blot with CAF50493(PMP22 antibody) at dilution of 1:1000.

SAMPLE

This Antibody is for Research Use Only. Not for Diagnostic Procedures.

This is a sample Antibody manual only. Always refer to the hard copy manual included in the Antibody for your experiment.