

anti- CADH2 antibody

Product Information

| | |
|---------------|---|
| Catalog No.: | CAF50500 |
| Size: | 100µg |
| Form: | liquid |
| Purification: | Immunogen affinity purified |
| Purity: | ≥95% as determined by SDS-PAGE |
| Host: | Rabbit |
| Clonality: | polyclonal |
| Clone ID: | None |
| IsoType: | IgG |
| Storage: | PBS with 0.02% sodium azide and 50% glycerol pH 7.3, -20°C for 12 months (Avoid repeated freeze / thaw cycles.) |

Background

This gene encodes a classical cadherin and member of the cadherin superfamily. Alternative splicing results in multiple transcript variants, at least one of which encodes a preproprotein is proteolytically processed to generate a calcium-dependent cell adhesion molecule and glycoprotein. This protein plays a role in the establishment of left-right asymmetry, development of the nervous system and the formation of cartilage and bone.

Immunogen information

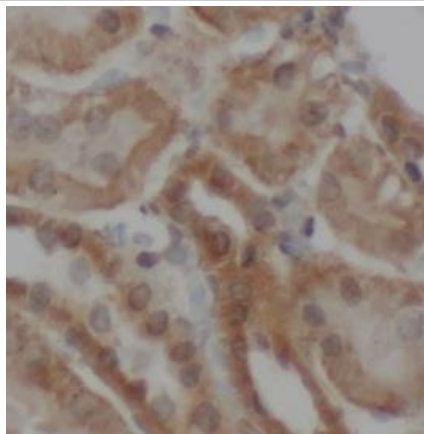
| | |
|--------------|--|
| Immunogen: | cadherin 2, type 1, N-cadherin (neuronal) |
| Synonyms: | Cadherin 2, CD325, CDH2, CDHN, CDw325, N cadherin, NCAD, N-cadherin, Neural cadherin |
| Observed MW: | 140 kDa |
| Uniprot ID : | P19022 |

Application

| | |
|----------------------------|------------|
| Reactivity: | Human, rat |
| Tested Application: | ELISA, IHC |
| Recommended dilution: IHC: | 1:20-1:200 |
| Image: | |

This Antibody is for Research Use Only. Not for Diagnostic Procedures.

This is a sample Antibody manual only. Always refer to the hard copy manual included in the Antibody for your experiment.



Immunohistochemistry of paraffin-embedded rat kidney using CAF50500(CADH2 Antibody) at dilution of 1:100

ONLY

SAMPLE

This Antibody is for Research Use Only. Not for Diagnostic Procedures.

This is a sample Antibody manual only. Always refer to the hard copy manual included in the Antibody for your experiment.