

FOR RESEARCH USE ONLY

NOT FOR USE IN CLINICAL DIAGNOSTIC PROCEDURES

12th Edition (Revised in Aug, 2016)

[PROPERTIES]**Source:** Polyclonal antibody preparation**Host:** Rabbit**Purification:** Antigen-specific affinity chromatography followed by Protein A affinity chromatography**Traits:** Liquid**Concentration:** 0.43mg/ml**UOM:** 200µl**Cross Reactivity:** Mouse; Rat**Applications:** WB; IHC; ICC; IP.**[IMMUNOGEN]****Immunogen:** Recombinant CSNK1d (Met1~Lys409) expressed in *E.coli***Accession No.:** RPD345Hu01**[APPLICATIONS]**

Western blotting: 0.5-2µg/mL;

Immunohistochemistry: 5-20µg/mL;

Immunocytochemistry: 5-20µg/mL;

Optimal working dilutions must be determined by end user.

[FORMULATION]**Form & Buffer:** Supplied as solution form in 0.01M PBS, pH7.4, containing 0.05% Proclin-300, 50% glycerol.**[STORAGE AND STABILITY]****Storage:** Avoid repeated freeze/thaw cycles.

Store at 4°C for frequent use.

Aliquot and store at -20°C for 12months.

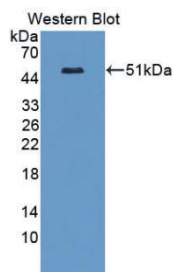
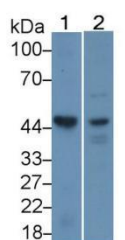
Stability Test: The thermal stability is described by the loss rate. The loss rate was determined by accelerated thermal degradation test, that is, incubate the protein at 37°C for 48h, and no obvious degradation and precipitation were observed. The loss rate is less than 5% within the expiration date under appropriate storage condition.**[IDENTIFICATION]**

Figure. Western Blot; Sample: Recombinant CSNK1d, Human.



Western Blot; Sample: Lane1: Mouse Heart lysate; Lane2: Human K562 cell lysate

Primary Ab: 1µg/mL Rabbit Anti-Human CSNK1d Antibody

Second Ab: 0.2µg/mL HRP-Linked Caprine Anti-Rabbit IgG Polyclonal Antibody(Catalog: SAA544Rb19)

[IMPORTANT NOTE]

The kit is designed for research use only, we will not be responsible for any issue if the kit was used in clinical diagnostic or any other procedures.