

**CAU28810**

**Polyclonal Antibody to Interleukin 10  
(IL10) Organism Species: Homo sapiens  
(Human)**

*Instruction manual*

FOR RESEARCH USE ONLY  
NOT FOR USE IN CLINICAL DIAGNOSTIC PROCEDURES

---

---

12th Edition (Revised in Aug, 2016)

**[ PROPERTIES ]**

**Source:** Polyclonal antibody preparation

**Host:** Rabbit

**Purification:** Antigen-specific Affinity Chromatography.

**Traits:** Liquid

**Concentration:** 200µg/mL

**UOM:** 50µg

**Applications:** WB; ICC; IHC-P; IHC-F; ELISA; IP; IF; FCM.

**[ IMMUNOGEN ]**

**Immunogen:** Recombinant IL10 (Met1~Asn178) expressed in *E.coli*.

**[ APPLICATIONS ]**

Western blotting: 0.5-2ug/ml

Immunocytochemistry in formalin fixed cells: 5-20ug/ml Immunohistochemistry in formalin fixed frozen section: 5-20ug/ml Immunohistochemistry in paraffin section: 5-20ug/ml

Enzyme-linked Immunosorbent Assay: 0.05-2ug/ml Optimal working dilutions must be determined by end user.

**[ FORMULATION ]**

**Form & Buffer:** Supplied as solution form in PBS, pH7.4, containing 0.02% NaN<sub>3</sub>, 50% glycerol.

**[ STORAGE AND STABILITY ]**

**Storage:** Avoid repeated freeze/thaw cycles.

Store at 4<sup>o</sup>C for frequent use.

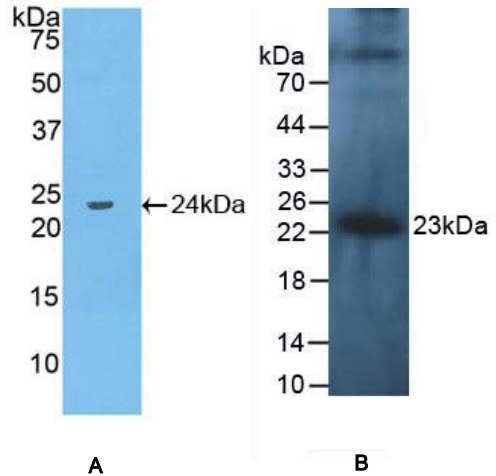
Aliquot and store at -20<sup>o</sup>C for 12 months.

**Stability Test:** The thermal stability is described by the loss rate. The loss rate was determined by accelerated thermal degradation test, that is, incubate the protein at 37<sup>o</sup>C for 48h, and no obvious degradation and precipitation were observed. The loss rate is less than 5% within the expiration date under appropriate storage condition.

[ IDENTIFICATION ]

Figure 1. Western Blot

- A.** Sample: Recombinant IL10, Human  
**B.** Human Leukocyte Cells  
Primary Ab: 2µg/mL Rabbit Anti-Human IL10 Ab  
Second Ab: 1:2000 Dilution of HRP-Linked Guinea pig



[ IMPORTANT NOTE ]

The kit is designed for research use only, we will not be responsible for any issue if the kit was used in clinical diagnostic or any other procedures.