

CAU29213

Monoclonal Antibody to Alanine Aminotransferase (ALT)

Organism Species: *Homo sapiens (Human)*

Instruction manual

FOR RESEARCH USE ONLY

NOT FOR USE IN CLINICAL DIAGNOSTIC PROCEDURES

12th Edition (Revised in Aug, 2016)

[PROPERTIES]

Source: Monoclonal antibody preparation

Host: Mouse

Antibody isotype: IgG2b Kappa

Purification: Protein A + Protein G affinity chromatography

Clone number: 11#

Traits: Liquid

Concentration: 1mg/mL

UOM: 100ug

Applications: WB; IHC; ICC; IP.

[IMMUNOGEN]

Immunogen: Recombinant ALT (Ile255~Ser496) expressed in *E.coli*

[APPLICATIONS]

Western blotting: 0.5-2µg/mL; 1:500-2000

Immunohistochemistry: 5-20µg/mL; 1:50-200

Immunocytochemistry: 5-20µg/mL; 1:50-200

Optimal working dilutions must be determined by end user.

[FORMULATION]

Form & Buffer: Supplied as solution form in PBS, pH7.4, containing 0.02% NaN₃, 50% glycerol.

[STORAGE AND STABILITY]

Storage: Avoid repeated freeze/thaw cycles.

Store at 4°C for frequent use.

Aliquot and store at -20°C for 12 months.

Stability Test: The thermal stability is described by the loss rate. The loss rate was determined by accelerated thermal degradation test, that is, incubate the protein at 37°C for 48h, and no

obvious degradation and precipitation were observed. The loss rate is less than 5% within the expiration date under appropriate storage condition.

[IDENTIFICATION]

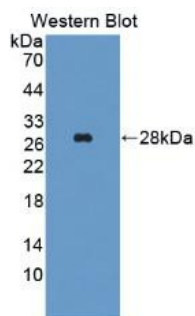


Figure. Western Blot; Sample:
Recombinant ALT, Human.

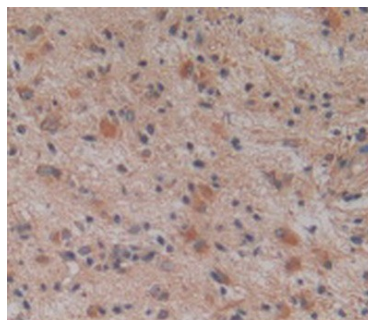
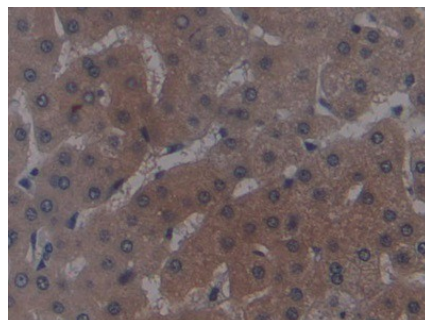


Figure. DAB staining on IHC-
P; Samples: Human Glioma Tissue.



DAB staining on IHC-P;
Samples: Human Liver cancer Tissue;
Primary Ab: 20 µg/ml Mouse Anti-
Human ALT Antibody
Second Ab: 2 µg/mL HRP-Linked
Caprine Anti-Mouse IgG Polyclonal
Antibody
(Catalog: SAA544Mu19)

[IMPORTANT NOTE]

The kit is designed for research use only, we will not be responsible for any issue if the kit was used in clinical diagnostic or any other procedures.