



CAU29364 General
Monoclonal Antibody to Lipopolysaccharide (LPS)
Organism Species: *Pan-species (General)*
Instruction manual

FOR RESEARCH USE ONLY
NOT FOR USE IN CLINICAL DIAGNOSTIC PROCEDURES

12th Edition (Revised in Aug, 2016)



[PROPERTIES]

Source: Monoclonal antibody preparation

Host: Mouse

Antibody isotype: IgG2b Kappa

Purification: Protein A + Protein G affinity chromatography

Clone number: C9

Traits: Liquid

Concentration: 1mg/ml

UOM: 10µg(10µl)

Applications: WB; IHC; ICC; IP.

[IMMUNOGEN]

Immunogen: Small Molecule, LPS conjugated to OVA.

Accession No.: CPB526Ge21

[APPLICATIONS]

Immunohistochemistry: 5-20µg/mL;1:50-200

Immunocytochemistry: 5-20µg/mL;1:50-200

Optimal working dilutions must be determined by end user.

[FORMULATION]

Form & Buffer: Supplied as solution form in 0.01M PBS, pH7.4, containing 0.05% Proclin-300, 50% glycerol.

[STORAGE AND STABILITY]

Storage: Avoid repeated freeze/thaw cycles.

Store at 4°C for frequent use.

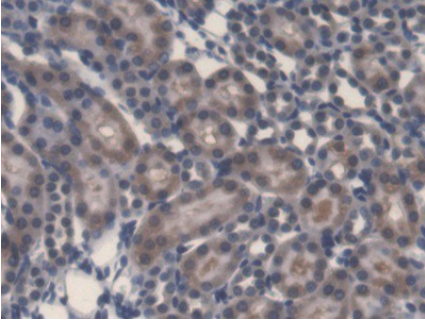
Aliquot and store at -20°C for 12 months.

Stability Test: The thermal stability is described by the loss rate. The loss rate was determined by accelerated thermal degradation test, that is, incubate the protein at 37°C for 48h, and no obvious degradation and precipitation were observed. The loss rate is less than 5% within the

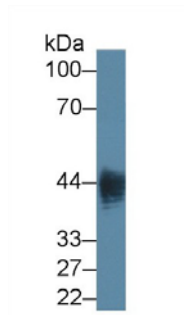


expiration date under appropriate storage condition.

[IDENTIFICATION]



DAB staining on IHC-P; Samples: Rat
Kidney Tissue



Western Blot; Sample: Coli LPS lysate;
Primary Ab: 0.5µg/ml Mouse Anti-LPS
Antibody
Second Ab: 0.2µg/mL HRP-Linked
Caprine Anti-Mouse IgG Polyclonal
Antibody

[IMPORTANT NOTE]

The kit is designed for research use only, we will not be responsible for any issue if the kit was used in clinical diagnostic or any other procedures.