

CAU29517
Monoclonal Antibody to Complement 1 Inhibitor (C1INH)
Organism Species: *Homo sapiens (Human)*
Instruction manual

FOR RESEARCH USE ONLY
NOT FOR USE IN CLINICAL DIAGNOSTIC PROCEDURES

12th Edition (Revised in Aug, 2016)

[PROPERTIES]

Source: Monoclonal antibody preparation
Host: Mouse
Antibody isotype: IgG2b Kappa
Purification: Protein A + Protein G affinity chromatography
Clone number: C2
Traits: Liquid
Concentration: 1mg/ml
UOM: 200µl
Cross Reactivity: N/A
Applications: WB; IHC; ICC; IP.

[IMMUNOGEN]

Immunogen: Recombinant C1INH (Pro399~Ala500) expressed in *E.coli*
Accession No.: RPA235Hu01

[APPLICATIONS]

Western blotting: 0.5-5µg/mL;
Immunohistochemistry: 5-50µg/mL;
Immunocytochemistry: 5-50µg/mL;
Optimal working dilutions must be determined by end user.

[FORMULATION]

Form & Buffer: Supplied as solution form in PBS, pH7.4, containing 0.02% NaN₃, 50% glycerol.

[STORAGE AND STABILITY]

Storage: Avoid repeated freeze/thaw cycles.
Store at 4°C for frequent use.
Aliquot and store at -20°C for 12 months.

Stability Test: The thermal stability is described by the loss rate. The loss rate was determined by accelerated thermal degradation test, that is, incubate the protein at 37°C for 48h, and no obvious degradation and precipitation were observed. The loss rate is less than 5% within the expiration date under appropriate storage condition.

[IDENTIFICATION]

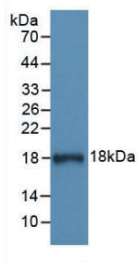
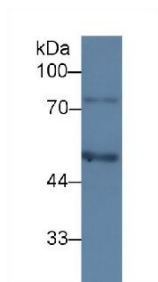
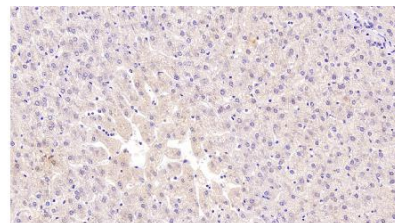


Figure. Western Blot; Sample: Recombinant C1INH, Human.



Western Blot; Sample: Human HepG2 cell lysate;
Primary Ab: 3 μ g/ml Mouse Anti-Human C1INH Antibody
Second Ab: 0.2 μ g/mL HRP-Linked Caprine Anti-Mouse IgG Polyclonal Antibody



DAB staining on IHC-P; Samples: Human Liver Tissue;
Primary Ab: 40 μ g/ml Mouse Anti-Human C1INH Antibody
Second Ab: 2 μ g/mL HRP-Linked Caprine Anti-Mouse IgG Polyclonal Antibody



Biomatik
Tel: (519) 489-7195, (800) 836-8089
Fax: (519) 231-0140, (877) 221-3515
Email: info@biomatik.com
<http://www.biomatik.com>

[IMPORTANT NOTE]

The kit is designed for research use only, we will not be responsible for any issue if the kit was used in clinical diagnostic or any other procedures.