

**Monoclonal Antibody to Pigment Epithelium Derived Factor (PEDF)**

**Organism Species: *Mus musculus (Mouse)***

***Instruction manual***

FOR RESEARCH USE ONLY

NOT FOR USE IN CLINICAL DIAGNOSTIC PROCEDURES

12th Edition (Revised in Aug, 2016)

**[ PROPERTIES ]**

**Source:** Monoclonal antibody preparation

**Host:** Mouse

**Antibody isotype:** IgG2b Kappa

**Purification:** Protein A + Protein G affinity chromatography

**Clone number:** C3

**Traits:** Liquid

**Concentration:** 0.7mg/ml

**UOM:** 200µl

**Cross Reactivity:** Rat

**Applications:** WB; IHC; ICC; IP.

**[ IMMUNOGEN ]**

**Immunogen:** Recombinant PEDF (Ser19~Thr417) expressed in *E.coli*

**Accession No.:** RPB972Mu01

**[ APPLICATIONS ]**

Western blotting: 0.5-2µg/mL;

Immunohistochemistry: 5-20µg/mL;

Immunocytochemistry: 5-20µg/mL;

Optimal working dilutions must be determined by end user.

**[ FORMULATION ]**

**Form & Buffer:** Supplied as solution form in PBS, pH7.4, containing 0.02% NaN<sub>3</sub>, 50% glycerol.

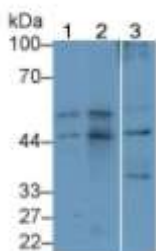
**[ STORAGE AND STABILITY ]**

**Storage:** Avoid repeated freeze/thaw cycles. Store at 4°C for frequent use.

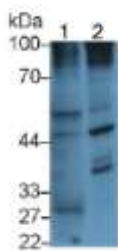
Aliquot and store at -20°C for 12 months.

**Stability Test:** The thermal stability is described by the loss rate. The loss rate was determined by accelerated thermal degradation test, that is, incubate the protein at 37°C for 48h, and no obvious degradation and precipitation were observed. The loss rate is less than 5% within the expiration date under appropriate storage condition.

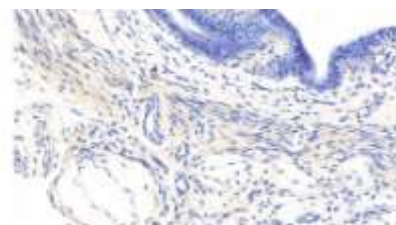
**[ IDENTIFICATION ]**



Western Blot; Sample: Lane1: Rat Cerebrum lysate; Lane2: Rat Heart lysate; Lane3: HepG2 cell lysate  
Primary Ab: 2µg/ml Mouse Anti-Mouse PEDF Antibody  
Second Ab: 0.2µg/mL HRP-Linked Rabbit Anti-Mouse IgG Polyclonal Antibody



Western Blot; Sample: Lane1: Rat kidney lysate; Lane2: HepG2 cell lysate  
Primary Ab: 2µg/ml Mouse Anti-Mouse PEDF Antibody  
Second Ab: 0.2µg/mL HRP-Linked Rabbit Anti-Mouse IgG Polyclonal Antibody



DAB staining on IHC-P; Samples: Mouse Uterus Tissue; Primary Ab: 20µg/ml Mouse Anti-Mouse PEDF Antibody  
Second Ab: 2µg/mL HRP-Linked Caprine Anti-Mouse IgG Polyclonal Antibody



**Biomatik**  
Tel: (519) 489-7195, (800) 836-8089  
Fax: (519) 231-0140, (877) 221-3515  
Email: [info@biomatik.com](mailto:info@biomatik.com)  
<http://www.biomatik.com>

**[ IMPORTANT NOTE ]**

The kit is designed for research use only, we will not be responsible for any issue if the kit was used in clinical diagnostic or any other procedures.



**Biomatik**  
Tel: (519) 489-7195, (800) 836-8089  
Fax: (519) 231-0140, (877) 221-3515  
Email: [info@biomatik.com](mailto:info@biomatik.com)  
<http://www.biomatik.com>