



**EKA51840 - 96 Tests**  
**IL-10 Colorimetric Sandwich ELISA Kit**  
**Species Reactivity: Human**

FOR RESEARCH USE ONLY. NOT FOR USE IN DIAGNOSTIC PROCEDURES

---

Last Updated: March 2021

## **INSTRUCTION MANUAL**

This manual may be updated as a result of continuous improvements.  
Please always refer to the hard copy manual included in the kit for your experiment.

Biomatik has been trusted by 10,000+ scientists since 2002.  
View thousands of publications citing Biomatik's fine products at [Google Scholar](#)



## CONTENTS

## PAGE

---

Introduction.....	3
Assay Principles.....	4
Assay Format.....	5
Assay Restrictions.....	6
Materials Included.....	6
Additional Materials Required.....	7
Health and Safety Precautions.....	7
Storage Information.....	8
Sample Preparation and Storage.....	9
Sample Experiment Layout.....	10
Immunoassay Protocol.....	11
Summarized Protocol.....	16
Sensitivity.....	17
Cross Reactivity and Specificity.....	17
Technical Support.....	18
ELISA Plate Template.....	19
Notes.....	20

## INTRODUCTION

Human IL-10, also known as Interleukin-10, is a 178 amino acid cytokine protein encoded by the IL10 gene located at locus 1q31-1q32 on chromosome 1. After initial synthesis, the peptide is proteolytically cleaved into the 18 residue signal peptide and 160 residue IL-10 protein, allowing the IL-10 to properly fold and mature. IL-10 is produced primarily by monocytes and to a lesser extent by lymphocytes. This cytokine has pleiotropic effects in immunoregulation and inflammation, can down-regulate the expression of Th1 cytokines, MHC class II antigens, and costimulatory molecules on macrophages. It also enhances B cell survival, proliferation, and antibody production. Moreover, IL-10 has the ability to block NF-kappa B activity, inhibit synthesis of a number of cytokines including IFN- $\gamma$ , IL-2, IL-3, TNF and GM-CSF produced by activated macrophages and helper T-cells, and is involved in the regulation of the JAK-STAT signaling pathway. Knockout studies in mice suggested the function of this cytokine as an essential immunoregulator in the intestinal tract. Mutations in this gene are associated with an increased susceptibility to HIV-1 infection and rheumatoid arthritis.

*Source: Entrez Gene: IL10 interleukin 10 [Homo sapiens]; Swiss-Prot: P22301*



## ASSAY PRINCIPLES

The Human IL-10 ELISA Kit contains the components necessary for quantitative determination of natural or recombinant Human IL-10 concentrations within any experimental sample including cell lysates, serum and plasma. This particular immunoassay utilizes the quantitative technique of a “Sandwich” Enzyme-Linked Immunosorbent Assay (ELISA) where the target protein (antigen) is bound in a “sandwich” format by the primary capture antibodies coated to each well-bottom and the secondary detection antibodies added subsequently by the investigator. The capture antibodies coated to the bottom of each well are specific for a particular epitope on Human IL-10 while the user-added detection antibodies bind to epitopes on the captured target protein. Amid each step of the procedure, a series of wash steps must be performed to ensure the elimination of non-specific binding between proteins to other proteins or to the solid phase. After incubation and “sandwiching” of the target antigen, a peroxidase enzyme is conjugated to the constant heavy chain of the secondary antibody (either covalently or via Avidin/Streptavidin-Biotin interactions), allowing for a colorimetric reaction to ensue upon substrate addition. When the substrate TMB (3, 3', 5, 5'-Tetramethylbenzidine) is added, the reaction catalyzed by peroxidase yields a blue color that is representative of the antigen concentration. Upon sufficient color development, the reaction can be terminated through addition of Stop Solution (2 N Sulfuric Acid) where the color of the solution will turn yellow. The absorbance of each well can then be read by a spectrophotometer, allowing for generation of a standard curve and subsequent determination of protein concentration.

## ASSAY FORMAT



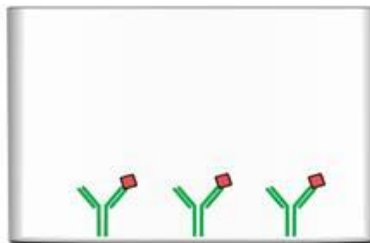
Capture Antibody



Capture antibodies specific for the target are coated to the plate. Additional binding sites on the plate are blocked.



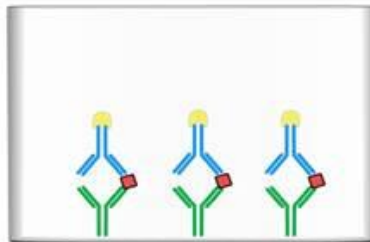
Target Antigen



Target antigen present in standard or sample is bound by capture antibodies on the solid-phase.



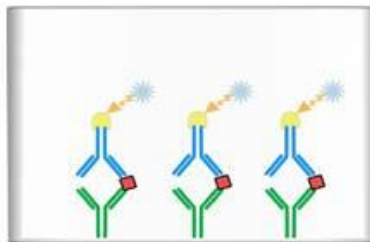
Biotinylated Detection Antibody



Biotinylated detection antibodies specific for the target are added to bind another epitope on the target antigen.



Streptavidin-HRP



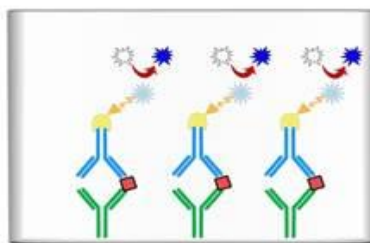
Streptavidin-HRP attaches to detection antibody via high affinity streptavidin-biotin interaction.



Unreacted TMB



Blue TMB Diimine Product



TMB substrate is converted to the blue TMB diimine via the HRP enzyme. Upon addition of acid, the reaction terminates and the wells can be read at 450 nm.

## ASSAY RESTRICTIONS

- This ELISA kit is intended for research purposes only, NOT diagnostic or clinical procedures of any kind.
- Materials included in this kit should NOT be used past the expiration date on the kit label.
- Reagents or substrates included in this kit should NOT be mixed or substituted with reagents or substrates from any other kits.
- Variations in pipetting technique, washing technique, operator laboratory technique, kit age, incubation time or temperature may cause differences in binding affinity of the materials provided.
- The assay is designed to eliminate interference and background by other cellular macromolecules or factors present within any biological samples. However, the possibility of background noise cannot be fully excluded until all factors have been tested using the assay kit.
- Individual results may vary due to differences in technique, plasticware and water sources.

## MATERIALS INCLUDED

Component	Quantity Per Plate	Container
Microstrips Coated w/ Capture Antibody	12 x 8-Well Microstrips	-
Protein Standard	Lyophilized	Red
Biotinylated Detection Antibody	Lyophilized	Yellow
400x Streptavidin-HRP	30 $\mu$ l	Blue
Wash Buffer (15x)	50 ml	Clear
Assay Diluent	50 ml	Clear
Ready-to-Use Substrate	12 ml	Brown
Stop Solution	12 ml	Clear
Adhesive Plate Sealers	2 Sheets	-
Technical Manual	1 Manual	-



## ADDITIONAL MATERIALS REQUIRED

The following materials and/or equipment are NOT provided in this kit but are necessary to successfully conduct the experiment:

- Microplate reader able to measure absorbance at 450 nm (with correction wavelength set to 540 nm or 570 nm)
- Micropipettes with capability of measuring volumes ranging from 1  $\mu$ l to 1 ml
- Distilled, deionized, and or purified water (recommended TOC 1-50 ppb, M $\Omega$ -cm 18.0)
- Squirrt bottle, manifold dispenser, multichannel pipette reservoir or automated microplate washer
- Graph paper or computer software capable of generating or displaying logarithmic functions
- Absorbent paper or vacuum aspirator
- Test tubes or microfuge tubes capable of storing  $\geq$ 1 ml
- Bench-top centrifuge (optional)
- Bench-top vortex (optional)
- Orbital shaker (optional)

## HEALTH AND SAFETY PRECAUTIONS

- Reagents provided in this kit may be harmful if ingested, inhaled or absorbed through the skin. Please carefully review the MSDS for each reagent before conducting the experiment.
- Stop Solution contains 2 N Sulfuric Acid ( $H_2SO_4$ ) and is an extremely corrosive agent. Please wear proper eye, hand and face protection when handling this material. When the experiment is finished, be sure to rinse the plate with copious amounts of running water to dilute the Stop Solution prior to disposing the plate.



## STORAGE INFORMATION

**Note:** If used frequently, reagents may be stored at 4°C.

**Unopened Kits:** Store at 4°C for 6 months.

Component	Storage Time	Storage Information
Microstrips Coated w/ Capture Antibody	6 Months	4°C
400x Streptavidin-HRP		
Wash Buffer (15x)		
Assay Diluent		
Ready-to-Use Substrate		
Stop Solution		
Protein Standard	Lyophilized: 6 Months Reconstituted: 1 Month	4°C
Biotinylated Detection Antibody		
Adhesive Plate Sealers	-	-
Technical Manual	-	-





## SAMPLE STORAGE AND PREPARATION

If samples are to be used within 24 hours, aliquot and store at 4°C. If samples are to be used over a long period of time, aliquot and store between -20°C and -80°C, depending on the duration of storage.

**Note:** Samples containing a visible precipitate or pellet must be clarified prior to use in the assay.

**Caution:** Avoid repeated freeze/thaw cycles to prevent loss of biological activity of proteins in experimental samples.

### ***Cell Lysate and Supernatants***

Remove large cell components via centrifugation and perform the assay. Cell lysates and supernatants require a dilution using Assay Diluent. A serial dilution may be performed to determine a suitable dilution factor for the sample.

### ***Serum***

Allow samples to clot in a serum separator tube (SST) for 30 minutes. After sufficient clotting, centrifuge at 1000 x g for 15 minutes and remove serum from SST in preparation for the assay. A serial dilution may be performed to determine a suitable dilution factor for the sample. For serum sample dilutions refer to Serum and Plasma Sample Dilution Protocol.

### ***Plasma***

Use heparin, citrate or EDTA as an anticoagulant to gather plasma from original biological sample. After collection of the plasma, centrifuge for 15 minutes at 1000 x g. This step must be performed within 30 minutes of plasma collection. A serial dilution may be performed to determine a suitable dilution factor for the sample. For plasma sample dilutions refer to Serum and Plasma Sample Dilution Protocol.

### ***Serum and Plasma Sample Dilution Protocol***

- a. Dilute the serum or plasma samples with PBS supplemented with 10-50% animal serum (Serum/Plasma Diluent).
- b. Reconstitute and dilute the Protein Standards using the Serum/Plasma Diluent, instead of Assay Diluent, so it reflects the environment of the samples being measured.
- c. Reconstitute the Biotin-Conjugated Detection Antibody in Assay Diluent and dilute the Streptavidin-HRP in Assay Diluent. Do not use the Serum/Plasma Diluent to reconstitute or dilute the Detection Antibody or Streptavidin-HRP.

### **SAMPLE EXPERIMENT LAYOUT**

	<b>1</b>	<b>2</b>	<b>3</b>	<b>4</b>	<b>5</b>	<b>6</b>
<b>A</b>	Standard (High Point)	Standard (High Point)	Standard (High Point)	Sample	Sample	Sample
<b>B</b>	Standard (1:2)	Standard (1:2)	Standard (1:2)	Sample	Sample	Sample
<b>C</b>	Standard (1:4)	Standard (1:4)	Standard (1:4)	Sample	Sample	Sample
<b>D</b>	Standard (1:8)	Standard (1:8)	Standard (1:8)	Sample	Sample	Sample
<b>E</b>	Standard (1:16)	Standard (1:16)	Standard (1:16)	Sample	Sample	Sample
<b>F</b>	Standard (1:32)	Standard (1:32)	Standard (1:32)	Sample	Sample	Sample
<b>G</b>	Standard (1:64)	Standard (1:64)	Standard (1:64)	Sample	Sample	Sample
<b>H</b>	Negative Control	Negative Control	Negative Control	Sample	Sample	Sample

## IMMUNOASSAY PROTOCOL

**Note:** Spin down the Protein Standard, Biotin-Conjugated Detection Antibody vials before opening. If possible, all incubation steps should be performed on an orbital shaker to equilibrate solutions when added to the microplate wells. Also, all provided solutions should be at ambient temperature prior to use.

### ***Reconstitution of Provided Materials***

1. Reconstitute the Protein Standard in 83 $\mu$ l of Assay Diluent for a concentration of .25ug/ml. **Note:** If working with serum or plasma, see page 9 prior to reconstitution.
2. Reconstitute the Biotin-Conjugated Detection Antibody in 50 $\mu$ l of Assay Diluent for a concentration of 83ug/ml.
3. Dilute the 15x Wash Buffer to 1x Wash Buffer using 14 volumes of ddH<sub>2</sub>O and 1 volume of 15x Wash Buffer.

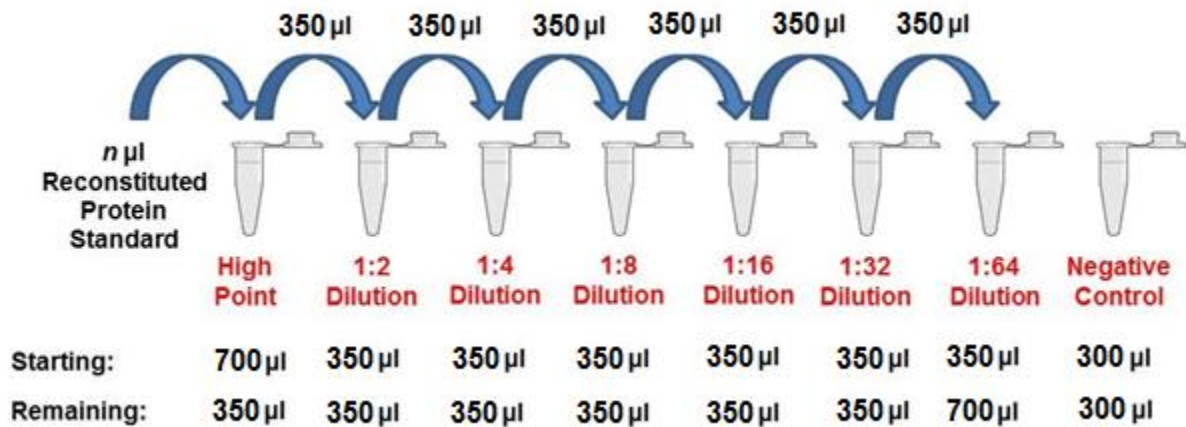
### ***Addition of Known Standard and Unknown Sample to Immunoassay***

The Human IL-10 ELISA Kit allows for the detection and quantification of endogenous levels of natural and/or recombinant Human IL-10 proteins within the range of 32-2000 pg/ml.

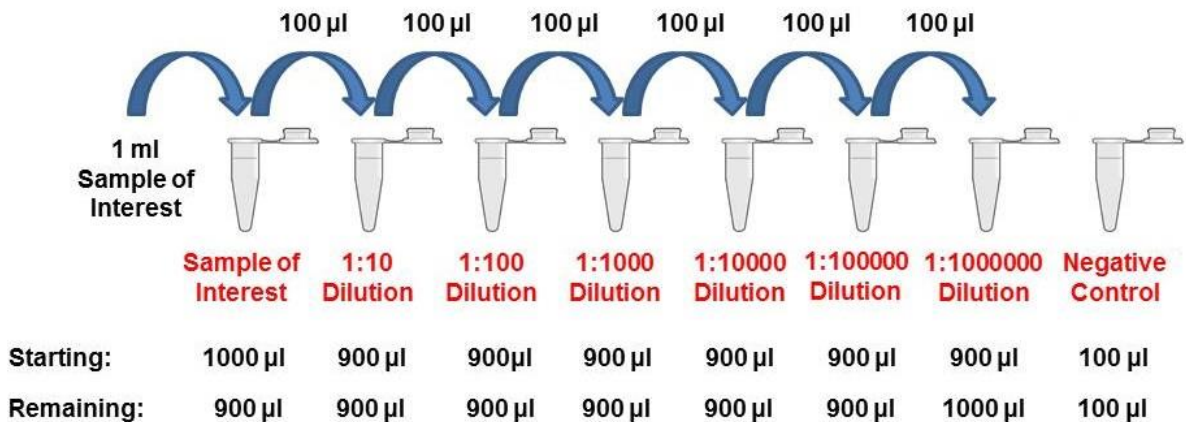
1. Prepare the appropriate diluent for the sample type. Ensure that the Protein Standard is reconstituted and diluted with the same diluent as the sample. Dilute Protein Standard within the range of 2000 pg/ml to 32 pg/ml in a series of microfuge tubes. Mix each tube thoroughly by inverting several times or by vortexing lightly to ensure proper equilibration. Add 100  $\mu$ l of each serial dilution step into the wells of a specified row or column of the 96-well microtiter plate in duplicate or triplicate and incubate at room temperature for 2 hours. Unknown Samples of Interest can be serially diluted with the appropriate diluent to the concentrations within the detection range of this assay kit and added to the plate at 100  $\mu$ l per well. See next page for illustration. Blank Control is defined as 100  $\mu$ l of diluent used to dilute samples and standard per well. Seal the plate.

## STANDARD AND SAMPLE SERIAL DILUTION

To obtain serial dilution high point, dilute reconstituted Protein Standard to the maximum concentration for serial dilution by adding  $n \mu\text{l}$  reconstituted Protein Standard to serial dilution high point tube and then raising the volume to  $700 \mu\text{l}$ . Shown below is a diagram illustrating an example 2-fold serial dilution on a given reconstituted Protein Standard.



For samples of unknown protein concentrations, serial dilute the experimental sample using Assay Diluent to determine range of detection and acceptable dilutions. Shown below is a diagram illustrating a 10-fold serial dilution on a given Sample of Interest.



### ***Addition of Detection Antibody to Capture Antibody-Bound Samples***

2. Aspirate the protein standard solution out of the microplate wells. If your lab does not have a vacuum-based aspirator, you may dump the solutions from the microplate into a waste container and blot 3-4 times on a stack of paper towels until most or all of the liquid is removed from the wells. Dilute the 15x Wash Buffer to 1x using ddH<sub>2</sub>O. Add 300-400 µl of 1x Wash Buffer to each well and gently shake for 5-7 minutes on an orbital shaker. Perform this wash step 4 times consecutively.
3. After the 4<sup>th</sup> wash step, dilute the detection antibody solution 1:200 in Assay Diluent to 0.42ug/ml. Mix the test tube either by inverting several times or vortexing to ensure proper equilibration. Ensure that there is enough detection antibody solution for all wells. Add 100 µl of the diluted detection antibody solution into each well, seal the plate and incubate at room temperature for 2 hours.

### ***Conjugation of Streptavidin-HRP to Biotinylated Detection Antibody***

4. Remove the detection antibody solution out of the microplate wells by either vacuum-based aspirator or paper towel blotting. Perform 4 consecutive wash steps with gentle shaking between each wash.
5. Dilute the 400x Streptavidin-HRP by 1:400 using Assay Diluent to a 1x Streptavidin-HRP solution.
6. After the 4<sup>th</sup> wash step, add 100 µl of 1x Streptavidin-HRP solution into each well and incubate at room temperature for 30 minutes. Avoid placing the plate in direct light.

### ***Application of Liquid Substrate for Colorimetric Reaction***

7. Remove the 1x Streptavidin-HRP solution out of the microplate wells by either vacuum-based aspirator or paper towel blotting. Prepare the Ready-to-Use Substrate by bringing it to room temperature without exposure to fluorescent or UV light as these may degrade the substrate. Perform 4 consecutive wash steps with gentle shaking between each wash.

8. After the 4th wash step, add 100  $\mu$ l of Ready-to-Use Substrate solution into each well and incubate at room temperature for approximately 15-20 mins. Avoid placing the plate in direct light. Closely monitor the color development as some wells may turn blue very quickly depending on analyte and/or detection antibody-HRP concentrations. The color in the wells should immediately change from blue to yellow.
  
9. The microplate is now ready to be read by a microplate reader. Within 30 minutes of adding the Stop Solution, determine the optical density (absorbance) of each well by reading the plate with the microplate reader set to 450 nm. If wavelength correction is available, set to 540 nm or 570 nm. If wavelength correction is not available, subtract readings at 540 nm or 570 nm from the readings at 450 nm.

**Caution:** Readings made directly at 450 nm without correction may be higher and less accurate.

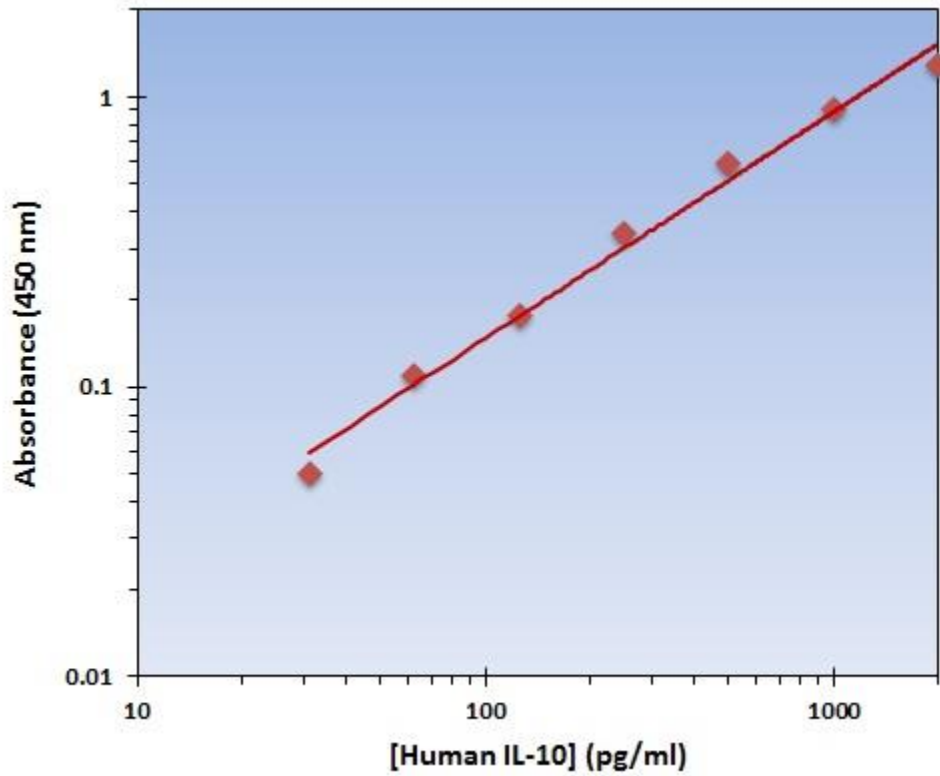
### ***Generation of Standard Curve and Interpretation of Data***

10. Average the duplicate or triplicate readings for each standard, control and sample and subtract the average zero standard optical density.
  
11. Generate a standard curve by using Microsoft Excel or other computer software capable of establishing a 4-Parameter Logistic (4-PL) curve fit. If using Excel or an alternative graphing tool, plot the average optical density values in absorbance units (y-axis) against the known standard concentrations in pg/ml (x-axis).

**Note:** Only use the values in which a noticeable gradient can be established. Afterwards, generate a best fit curve or “trend-line” through the plotted points via regression analysis.

**Note:** Shown on the next page is an example of typical data produced by analysis of the standard sample.

The data and subsequent graph was obtained after performing a cytokine ELISA for Human IL-10. Each known sample concentration was assayed in triplicate.





## SUMMARIZED PROTOCOL

Reconstitute Biotinylated Detection Antibody and Protein Standard and dilute the 15x Wash Buffer as specified.



Perform serial dilution of Protein Standard and prepare samples as desired. See sample preparation section for instructions to dilute serum and plasma samples.



Add 100ul of Protein Standard, sample or control to each well and incubate for 2 hours at room temperature.



Aspirate Protein Standards, samples or controls out and wash plate 4 times.



Dilute Biotinylated Detection Antibody as specified. Add 100ul to each well and incubate for 2 hours at room temperature.



Aspirate Biotinylated Detection Antibody out and wash plate 4 times.



Dilute 400x Streptavidin-HRP as specified. Add 100ul of 1x Streptavidin-HRP to each well and incubate at room temperature for 30 minutes.



Aspirate 1x Streptavidin-HRP out and wash plate 4 times.



Add 100ul of Ready-to-Use Substrate to each well and incubate at room temperature for color development.



Add 100ul of Stop Solution and read plate at 450nm.





## **SENSITIVITY**

The Human IL-10 ELISA Kit allows for the detection and quantification of endogenous levels of natural and/or recombinant Human IL-10 proteins within the range of 32-2000 pg/ml.

## **CROSS REACTIVITY AND SPECIFICITY**

The Human IL-10 ELISA is capable of recognizing both recombinant and naturally produced Human IL-10 proteins. The antigens listed below were tested at 50 ng/ml and exhibited less than 1% cross reactivity.

- Murine: IL-10
- Rat: IL-10

The antigens listed below were tested at 50 ng/ml and did not exhibit significant cross reactivity or interference.

- Human: IFN-gamma, IL-4, IL-7, IL-12, IL-13, IL-15, IL-17A, IL-22
- Murine: IL-4, IL-10
- Rat: IL-4, IL-10



## **TECHNICAL SUPPORT**

For troubleshooting information or assistance, please contact us at:

Tel: (519) 489-7195, (800) 836-8089

Fax: 519) 231-0140, (877) 221-3515

Email: [product@biomatik.com](mailto:product@biomatik.com)

# ELISA PLATE TEMPLATE

	A	B	C	D	E	F	G	H	
1									
2									
3									
4									
5									
6									
7									
8									
9									
10									
11									
12									



## NOTES