

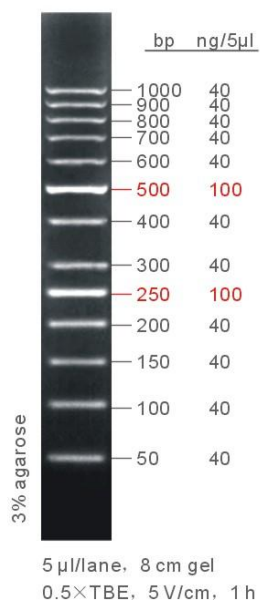
## Product Information

Version 5.2, Revision 2014-09-21

### 50bp DNA Ladder Plus, Quantitative, Ready to Use

<b>Code-Size:</b>	M7115-100 Loads (500µl), M7115-5x100 Loads (5x500µl)
<b>Contents:</b>	13 DNA Fragments (bp): 50, 100, 150, 200, <b>250</b> , 300, 400, <b>500</b> , 600, 700, 800, 900, and 1000
<b>Concentration:</b>	640ng/5µl
<b>Band Concentration:</b>	250bp and 500bp Bands: 100ng/5µl; Other Bands: 40ng/5µl

### 50bp ladder plus



#### Description:

**50bp DNA Ladder Plus (Quantitative)** is ideal for determining the size of double-stranded DNA from 50 to 1000 base pairs. The ladder consists of 13 linear double-stranded DNA fragments, chromatography-purified. The intensity of the 250bp and 500bp has been increased to serve as a reference for easy identification. All fragments are precisely quantified and mixed during the production. For 5µl loading, all fragments except 250bp and 500bp are at 40ng. The 250bp and 500bp fragments are at 100ng. This ladder is pre-mixed with loading dye and is ready to use.

#### Recommended Loading: 5µl/Lane.

Add 5µl ladder directly to each well. You may need more or less than 5µl of ladder, depending on well size and level of intensity needed to visualize the bands.

#### Recommended Electrophoresis Condition:

5µl/Lane, 8 cm 3 % Agarose Gel, 0.5×TBE, 5V/cm, 1h.

**Storage:** 1 year at room temperature; for long term storage, please keep at -20 °C.

#### Important Notes:

Do not heat before loading.

For quantification, adjust the concentration of the sample to equalize.

Visualize DNA by staining with ethidium bromide or with SYBR Green I.

This material is for laboratory research purpose and/or in vitro use only and is not to be used in humans or animals.