



**RPU42133 Porcine 50µg**  
**Recombinant Interferon Beta (IFN $\beta$ )**  
**Organism Species: *Sus scrofa*; Porcine (Pig)**  
***Instruction manual***

FOR RESEARCH USE ONLY  
NOT FOR USE IN CLINICAL DIAGNOSTIC PROCEDURES

---

12th Edition (Revised in Aug, 2016)

## [ PROPERTIES ]

**Source:** Prokaryotic expression

**Host:** *E.coli*

**Residues:** Met22~Asn186

**Tags:** N-terminal His and GST Tag

**Subcellular Location:**

**Purity:** > 97%

**Traits:** Freeze-dried powder

**Buffer formulation:** PBS, pH7.4, containing 0.01% SKL.

**Original Concentration:** 200µg/mL

**Applications:** Positive Control; Immunogen; SDS-PAGE; WB.

(May be suitable for use in other assays to be determined by the end user.)

**Predicted isoelectric point:** 6.4

**Predicted Molecular Mass:** 49.6kDa

**Accurate Molecular Mass:** 50kDa as determined by SDS-PAGE reducing conditions.

## [ USAGE ]

Reconstitute in PBS (pH7.4) to a concentration of 0.1-1.0 mg/mL. Do not vortex.

## [ STORAGE AND STABILITY ]

**Storage:** Avoid repeated freeze/thaw cycles.

Store at 2-8°C for one month.

Aliquot and store at -80°C for 12 months.

**Stability Test:** The thermal stability is described by the loss rate. The loss rate was determined by accelerated thermal degradation test, that is, incubate the protein at 37°C for 48h, and no obvious degradation and precipitation were observed. The loss rate is less than 5% within the expiration date under appropriate storage condition.

**[ SEQUENCE ]**

```
MSYDVLRYQ QRSSNLACQK LLGQLPGTPQ  
YCLEDRMNFE VPEEIMQPPQ FQKEDAVLII HEMLQQIFGI LRRNFSSTGW  
NETVIKTILV ELDGQMDDLE TIL EEIMEEE NFPRGDMTIL HLKYYLSIL  
QYLKSKEYRS CAWTVVQVEI LRNFSFLNRL TDYLRN
```

**[ IDENTIFICATION ]**

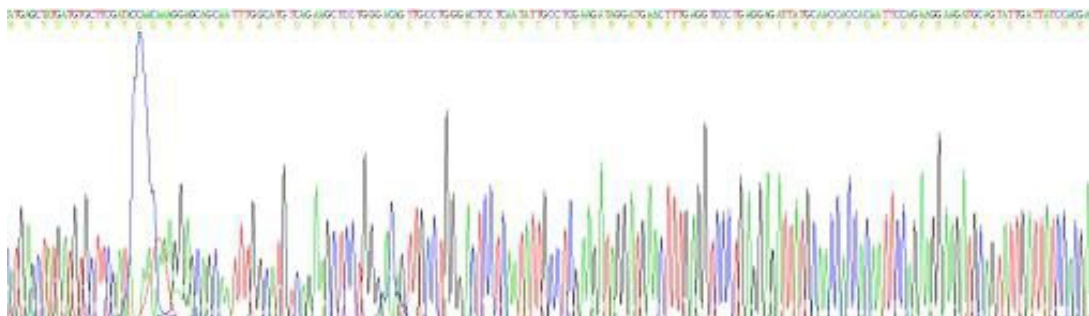


Figure. Gene Sequencing (Extract)

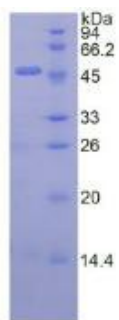


Figure. SDS-PAGE

**[ IMPORTANT NOTE ]**

The kit is designed for research use only, we will not be responsible for any issue if the kit was used in clinical diagnostic or any other procedures.