



**RPU42550 Human 10µg**

**Recombinant Lipase, Hepatic (LIPC)**

**Organism Species: *Homo sapiens* (Human)**

***Instruction manual***

**FOR RESEARCH USE ONLY**

**NOT FOR USE IN CLINICAL DIAGNOSTIC PROCEDURES**

---

12th Edition (Revised in Aug, 2016)



## [ PROPERTIES ]

**Source:** Prokaryotic expression

**Host:** *E.coli*

**Residues:** Ser347~Pro478

**Tags:** N-terminal His Tag

**Subcellular Location:** Secreted

**Purity:** > 95%

**Traits:** Freeze-dried powder

**Buffer formulation:** 20mM Tris, 150mM NaCl, pH8.0, containing 1mM EDTA, 1mM DTT, 0.01% SKL, 5% Trehalose and Proclin300.

**Original Concentration:** 200µg/mL

**Applications:** Positive Control; Immunogen; SDS-PAGE; WB.

(May be suitable for use in other assays to be determined by the end user.)

**Predicted isoelectric point:** 9.1

**Predicted Molecular Mass:** 16.4kDa

**Accurate Molecular Mass:** 17/13kDa as determined by SDS-PAGE reducing conditions.

## [ USAGE ]

Reconstitute in 20mM Tris, 150mM NaCl (pH8.0) to a concentration of 0.1-1.0 mg/mL. Do not vortex.

## [ STORAGE AND STABILITY ]

**Storage:** Avoid repeated freeze/thaw cycles.

Store at 2-8°C for one month.

Aliquot and store at -80°C for 12 months.

**Stability Test:** The thermal stability is described by the loss rate. The loss rate was determined by accelerated thermal degradation test, that is, incubate the protein at 37°C for 48h, and no obvious degradation and precipitation were observed. The loss rate is less than 5% within the expiration date under appropriate storage condition.



**[ SEQUENCE ]**

SPFK VYHYQFKIQF INQTETPIQT TFTMSLLGTK EKMQKIPITL  
GKGIASNKTY SFLITLDVDI GELIMIKFKW ENSAVWANVW DTVQTIIPWS  
TGPRHSGLVL KTIRVKAGET QQRMTFCSEN TDDLLLRP

**[ IDENTIFICATION ]**

TTCGCCATCAAGTTTATCATTCACAGTTAAAGATCCAGTTCATCAACAACTGAGACGCCAATCAAAACAATTTTACCATGTCCTACTCGAACAAAAGAGAAATCCAGAAAATTCACATCCTCTGGCCAAAGGAAITTCCTAGTAATAAAACGATATTCCTTCTTATCCGCTGATGTGATATCCGGGAGCTGATCATGATC  
S P F K V Y H V Q L K I Q P I N Q T E T P I Q T T F T H S L L G T K E K H Q K I P I T L G K G I A S N K T Y S F L I T L D V D I G E L I H I .

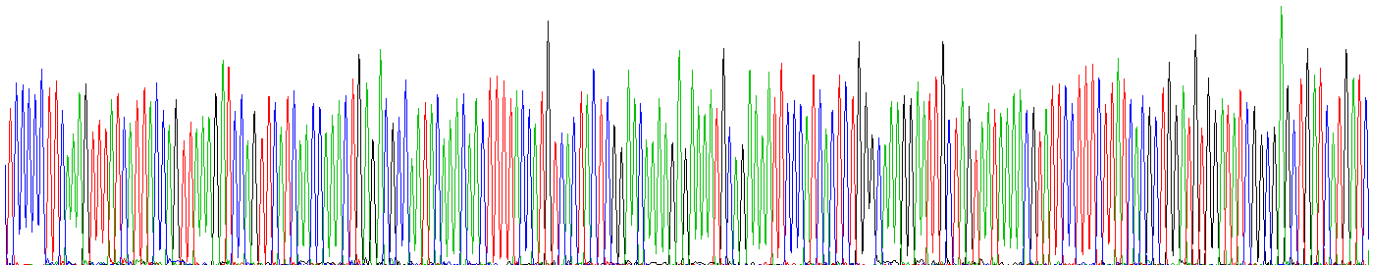


Figure. Gene Sequencing (Extract)

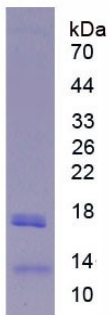


Figure. SDS-PAGE

**[ IMPORTANT NOTE ]**

The kit is designed for research use only, we will not be responsible for any issue if the kit was used in clinical diagnostic or any other procedures.