



**RPU43643 Human 100µg**

**Recombinant Ribonuclease A3 (RNASE3)**

**Organism Species: *Homo sapiens (Human)***

***Instruction manual***

FOR RESEARCH USE ONLY

NOT FOR USE IN CLINICAL DIAGNOSTIC PROCEDURES

---

12th Edition (Revised in Aug, 2016)



## [ PROPERTIES ]

**Source:** Prokaryotic expression

**Host:** *E.coli*

**Residues:** Pro30~Val154

**Tags:** N-terminal His Tag

**Subcellular Location:** Secreted

**Purity:** > 90%

**Traits:** Freeze-dried powder

**Buffer formulation:** 20mM Tris, 150mM NaCl, pH8.0, containing 1mM EDTA, 1mM DTT, 0.01% SKL, 5% Trehalose and Proclin300.

**Original Concentration:** 200µg/mL

**Applications:** Positive Control; Immunogen; SDS-PAGE; WB.

(May be suitable for use in other assays to be determined by the end user.)

**Predicted isoelectric point:** 10.7

**Predicted Molecular Mass:** 18.3kDa

**Accurate Molecular Mass:** 19kDa as determined by SDS-PAGE reducing conditions.

## [ USAGE ]

Reconstitute in 20mM Tris, 150mM NaCl (pH8.0) to a concentration of 0.1-1.0 mg/mL. Do not vortex.

## [ STORAGE AND STABILITY ]

**Storage:** Avoid repeated freeze/thaw cycles.

Store at 2-8°C for one month.

Aliquot and store at -80°C for 12 months.

**Stability Test:** The thermal stability is described by the loss rate. The loss rate was determined by accelerated thermal degradation test, that is, incubate the protein at 37°C for 48h, and no obvious degradation and precipitation were observed. The loss rate is less than 5% within the expiration date under appropriate storage condition.



[ **SEQUENCE** ]

P QFTRAQWFAI QHISLNPPRC  
TIAMRAINNY RWRCKNQNTF LRTTFANVVN VCGNQSIRCP HNRTLNNCHR  
SRFRVPLLHC DLINPGAQNI SNCTYADRPG RRFYVVACDN RDPRDSPRYP  
VVPV

[ **IDENTIFICATION** ]

CGCGTTTACGAGGCTCGAGTGTTCCTCGGCGACTCGCTGACCCCTCGATCGACATTCGATCCGGGSAATTAGCAATTATCGATGCGCTTGCAGAACGAAATACCTTTCTTCTGACACCTTTTCTAATGTACTTAATGTTTGTGGTAACCAAGTATACCTCCCTCATACGAACTCTGAGCAATTGTGATCGG  
P Q F T R A Q W F A I Q H I S L N P P R C T I A M R A I N N Y R W R C K N Q N T F L R T T F A N V V H V C G N Q S I R C P H N R T L N N C H R

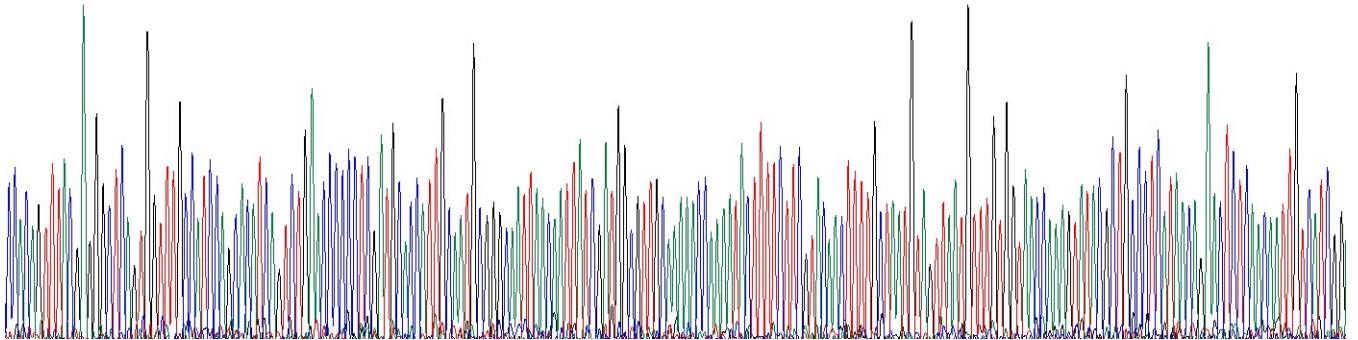
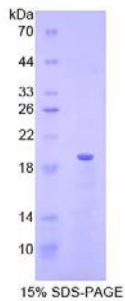


Figure. Gene Sequencing (Extract)



[ **IMPORTANT NOTE** ]

The kit is designed for research use only, we will not be responsible for any issue if the kit was used in clinical diagnostic or any other procedures.