



Biomatik
Tel: (519) 489-7195, (800) 836-8089
Fax: (519) 231-0140, (877) 221-3515
Email: info@biomatik.com
<http://www.biomatik.com>

RPU43767

Recombinant Serum Amyloid A (SAA)

Organism Species: *Homo sapiens* (Human)

Instruction manual

FOR RESEARCH USE ONLY

NOT FOR USE IN CLINICAL DIAGNOSTIC PROCEDURES

12th Edition (Revised in Aug, 2016)

[PROPERTIES]

Source: Prokaryotic expression

Host: *E.coli*

Residues: Arg19~Tyr122

Tags: N-terminal His Tag

Subcellular Location: Secreted

Purity: > 95%

Traits: Freeze-dried powder

Buffer formulation: 20mM Tris, 150mM NaCl, pH8.0, containing 0.01% SKL, 5% Trehalose and Proclin300.

Original Concentration: 200µg/mL

Applications: Positive Control; Immunogen; SDS-PAGE; WB.

(May be suitable for use in other assays to be determined by the end user.)

Predicted isoelectric point: 6.3

Predicted Molecular Mass: 12.9kDa

Accurate Molecular Mass: 14kDa as determined by SDS-PAGE reducing conditions.

[USAGE]

Reconstitute in 20mM Tris, 150mM NaCl (pH8.0) to a concentration of 0.1-1.0 mg/mL. Do not vortex.

[STORAGE AND STABILITY]

Storage: Avoid repeated freeze/thaw cycles.

Store at 2-8°C for one month.

Aliquot and store at -80°C for 12 months.

Stability Test: The thermal stability is described by the loss rate. The loss rate was determined by accelerated thermal degradation test, that is, incubate the protein at 37°C for 48h, and no obvious degradation and precipitation were observed. The loss rate is less than 5% within the expiration date under appropriate storage condition.

[SEQUENCE]

RS FFSFLGEAFD GARDMWRAYS DMREANYIGS
DKYFHARGNY DAAKRGGV WAAEAISDAR ENIQRFHG AEDSLADQAA
NEWGRSGKDP NHFRPAGLPE KY

[IDENTIFICATION]

DGAGCTTCTTTTGGTCTTGGGAGCTTTTGGGCTGGGACATGTGGAGAGCTACTCTGACATGAGAGAGCCAAATTACATGGCTCAGACAAATCTTCATCTCTGGGGAGCTATGATCTGCCAAAGGGGACCTGGGGTTCCTGGGCTCCAGAGTGCAGCGATGCCAGAGAGATATCCAGAGATCTTT
R S F F S F L G E A F D G A R D H V R A Y S D H R E A N Y I G S D K Y F H A R G N Y D A A K R G P G G A W A A E V I S D A R E N I Q R F F

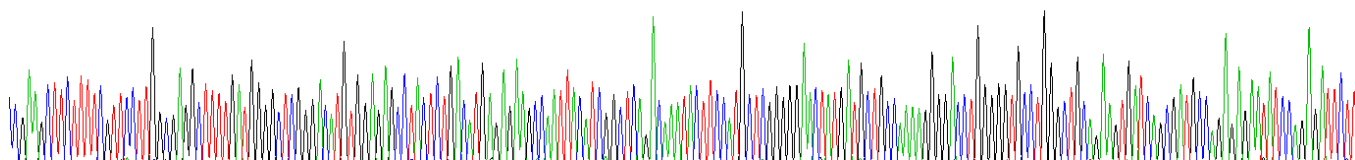
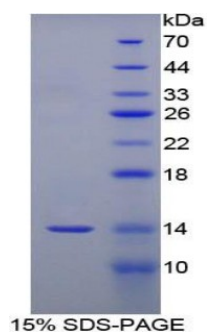


Figure. Gene Sequencing (Extract)



[IMPORTANT NOTE]

The kit is designed for research use only, we will not be responsible for any issue if the kit was used in clinical diagnostic or any other procedures.