



**RPU51352 Human 200µg**

**Recombinant Lipase, Lipoprotein (LIPD)**

**Organism Species: *Homo sapiens* (Human)**

***Instruction manual***

FOR RESEARCH USE ONLY

NOT FOR USE IN CLINICAL DIAGNOSTIC PROCEDURES

---

12th Edition (Revised in Aug, 2016)



## [ PROPERTIES ]

**Source:** Prokaryotic expression

**Host:** *E.coli*

**Residues:** His55~Glu316

**Tags:** N-terminal His Tag

**Subcellular Location:** Secreted

**Purity:** > 90%

**Traits:** Freeze-dried powder

**Buffer formulation:** 20mM Tris, 150mM NaCl, pH8.0, containing 0.01% SKL, 5% Trehalose.

**Original Concentration:** 200µg/mL

**Applications:** Positive Control; Immunogen; SDS-PAGE; WB.

(May be suitable for use in other assays to be determined by the end user.)

**Predicted isoelectric point:** 6.5

**Predicted Molecular Mass:** 32.6kDa

**Accurate Molecular Mass:** 33kDa as determined by SDS-PAGE reducing conditions.

## [ USAGE ]

Reconstitute in 20mM Tris, 150mM NaCl (pH8.0) to a concentration of 0.1-1.0 mg/mL. Do not vortex.

## [ STORAGE AND STABILITY ]

**Storage:** Avoid repeated freeze/thaw cycles.

Store at 2-8°C for one month.

Aliquot and store at -80°C for 12 months.

**Stability Test:** The thermal stability is described by the loss rate. The loss rate was determined by accelerated thermal degradation test, that is, incubate the protein at 37°C for 48h, and no obvious degradation and precipitation were observed. The loss rate is less than 5% within the expiration date under appropriate storage condition.

## [ SEQUENCE ]



HLIPGV AESVATCHFN HSSKTFMVIH GWTVTGMYES WVPKLVAALY  
KREPDSNVIV VDWLSRAQEH YPVSAGYTKL VGQDVARFIN WMEEEFNYP  
DNVHLLGYSL GAHAAGIAGS LTNKKVNRIT GLDPAGPNFE YAEAPSRLSP  
DDADFVDVLH TFTRGSPGRS IGIQKPVGHV DIYPNGGTFQ PGCNIGEAIR  
VIAERGLGDV DQLVKCSHER SIHLFIDSLL NEENPSKAYR CSSKEAFEKG  
LCLSCRKNRC>NNLGYE

**[ IDENTIFICATION ]**

TGACCTCATTTCCCGAGTACGAGAGTCCGTCGCTACCTGTGATTTCAATCCACAGCAGCAAAAGCTTCATGGTGAATCCATGCTCGATGGATGGTAACAGGAAATGATGAGAGTTGGTCCCAAACTTGTGGCCGCCCTGTACAGGAGAGAGACGACTCCAAATGTCATTTGTGGTGGCTGGCTGTGTCAGGGCTCAGGAGCATTACCCAGTGTCC  
H L I P G V A E S V A T C H F N H S S K T F M V I H G V H V T G M Y E S V V P K L V A A L Y K R E P D S N V I V V D W L S R A Q E H Y P V S

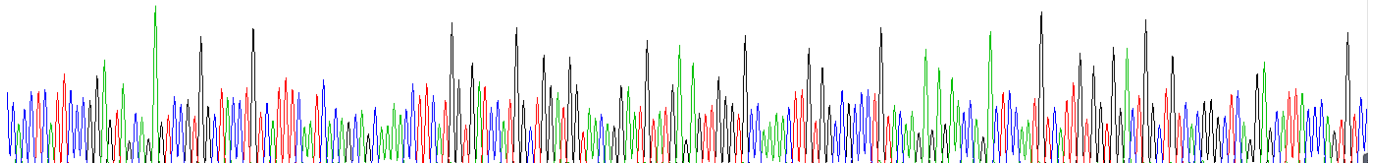
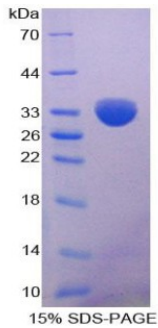


Figure. Gene Sequencing (Extract)



**[ IMPORTANT NOTE ]**

The kit is designed for research use only, we will not be responsible for any issue if the kit was used in clinical diagnostic or any other procedures.