



**Biomatik**  
Tel: (519) 489-7195, (800) 836-8089  
Fax: (519) 231-0140, (877) 221-3515  
Email: [info@biomatik.com](mailto:info@biomatik.com)  
<http://www.biomatik.com>

**RPU52827 Human 100µg**  
**Recombinant Cluster Of Differentiation 109 (CD109)**  
**Organism Species: *Homo sapiens (Human)***  
***Instruction manual***

**FOR RESEARCH USE ONLY**  
**NOT FOR USE IN CLINICAL DIAGNOSTIC PROCEDURES**

---

12th Edition (Revised in Aug, 2016)

## **[ PROPERTIES ]**

**Source:** Prokaryotic expression

**Host:** *E.coli*

**Residues:** Ala1146~Gln1390

**Tags:** N-terminal His Tag

**Subcellular Location:** Membrane

**Purity:** > 80%

**Traits:** Freeze-dried powder

**Buffer formulation:** 20mM Tris, 150mM NaCl, pH8.0, containing 1mM EDTA, 1mM DTT, 0.01% SKL, 5% Trehalose and Proclin300.

**Original Concentration:** 200µg/mL

**Applications:** Positive Control; Immunogen; SDS-PAGE; WB.

(May be suitable for use in other assays to be determined by the end user.)

**Predicted isoelectric point:** 7.2

**Predicted Molecular Mass:** 30.7kDa

**Accurate Molecular Mass:** 33kDa as determined by SDS-PAGE reducing conditions.

## **[ USAGE ]**

Reconstitute in 20mM Tris, 150mM NaCl (pH8.0) to a concentration of 0.1-1.0 mg/mL. Do not vortex.

## **[ STORAGE AND STABILITY ]**

**Storage:** Avoid repeated freeze/thaw cycles.

Store at 2-8°C for one month.

Aliquot and store at -80°C for 12 months.

**Stability Test:** The thermal stability is described by the loss rate. The loss rate was determined by accelerated thermal degradation test, that is, incubate the protein at 37°C for 48h, and no obvious degradation and precipitation were observed. The loss rate is less than 5% within the expiration date under appropriate storage condition.

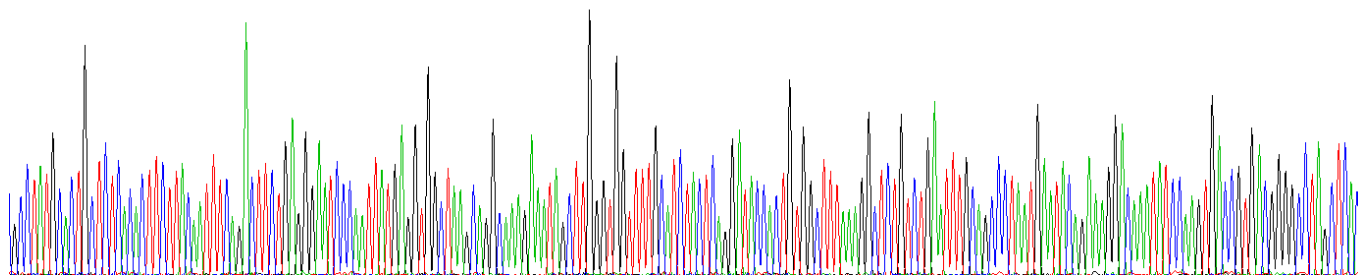
## [ SEQUENCE ]

```

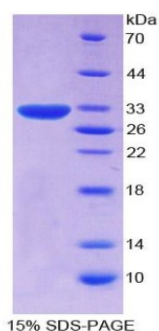
                                AYALL
SHFLQFQTSE  GIPIMRWLSR  QRNSLGGFAS  TQDTTVALKA  LSEFAALMNT
ERTNIQVTVT  GPSSPSPVKF  LIDTHNRLLL  QTAELAVVQP  TAVNISANGF
GFAICQLNVV  YNVKASGSSR  RRRSIQNQEA  FDLDVAVKEN  KDDLNHVDLN
VCTSFSGPGR  SGMALMEVNL  LSGFMVPSEA  ISLSETVKKV  EYDHGKLNLY
LDSVNETQFC  VNIPAVRNFK  VSNTQDASVS  IDVYYEPRRQ
  
```

## [ IDENTIFICATION ]

GCGTATGCTGCTCTCAGCTTCTTCAATTCAGCTCTGAGGAAATCCAAATATGAGTGCCTAGCAGGCAAGAAATAGCTTGGTGTCTTCATCTCAGGATCCACTGTGGCTTTAAGGCTCTGCTGAATTTGCAAGCCTAATGAATACAGAAAGCAAAATATCCAGTGAACCTGAGGGGCTAGCTCAC  
 A Y A L L S H F L Q F Q T S E G I P I M R V L S R Q R N S L G G F A S T Q D T T V A L K A L S E F A A L M N T E R T N I Q V T V T G P S S P



**Figure. Gene Sequencing (Extract)**



**Figure. SDS-PAGE**

## [ IMPORTANT NOTE ]

The kit is designed for research use only, we will not be responsible for any issue if the kit was used in clinical diagnostic or any other procedures.