



**Biomatik**  
Tel: (519) 489-7195, (800)  
836-8089  
Fax: (519) 231-0140, (877) 221-3515  
Email: [info@biomatik.com](mailto:info@biomatik.com)  
<http://www.biomatik.com>

**RPU53159 100µg**  
**Recombinant Procollagen Lysine-1,2-Oxoglutarate-5-Dioxygenase 1 (PLOD1)**  
**Organism Species: Homo sapiens (Human)**  
***Instruction manual***

FOR RESEARCH USE ONLY  
NOT FOR USE IN CLINICAL DIAGNOSTIC PROCEDURES

---

---

12th Edition (Revised in Aug, 2016)

**#1 Source for BioReagents, ELISA Kits and Custom Gene, Peptide, Protein & Antibody Services**

## **[ PROPERTIES ]**

**Source:** Prokaryotic expression.

**Host:** *E. coli*

**Residues:** Gln636~Pro727

**Tags:** N-terminal His-Tag

**Tissue Specificity:** Liver, Kidney, Heart, Testis.

**Subcellular Location:** Rough endoplasmic reticulum membrane; Peripheral membrane protein; Luminal side.

**Purity:** >95%

**Traits:** Freeze-dried powder

**Buffer formulation:** 100mM NaHCO<sub>3</sub>, 500mM NaCl, pH8.3, containing 1mM EDTA, 1mM DTT, 0.01% sarcosyl, 5%Trehalose and Proclin300.

**Original Concentration:** 200µg/mL

**Applications:** Positive Control; Immunogen; SDS-PAGE; WB.

(May be suitable for use in other assays to be determined by the end user.)

**Predicted isoelectric point:** 9.1

**Predicted Molecular Mass:** 14.2kDa

**Accurate Molecular Mass:** 14kDa as determined by SDS-PAGE reducing conditions.

## **[ USAGE ]**

Reconstitute in 100mM NaHCO<sub>3</sub>, 500mM NaCl (pH8.3) to a concentration of 0.1-1.0 mg/mL. Do not vortex.

## **[ STORAGE AND STABILITY ]**

**Storage:** Avoid repeated freeze/thaw cycles.

Store at 2-8°C for one month.

Aliquot and store at -80°C for 12 months.

**Stability Test:** The thermal stability is described by the loss rate. The loss rate

**#1 Source for BioReagents, ELISA Kits and Custom Gene, Peptide, Protein & Antibody Services**

was determined by accelerated thermal degradation test, that is, incubate the protein at 37°C for 48h, and no obvious degradation and precipitation were observed. The loss rate is less than 5% within the expiration date under appropriate storage condition.

## [ SEQUENCE ]

QFDLA FVRYKPDEQ  
PSLMPHHDAS TFTINIALNR VGVDYEGGGC RFLRYNCSIR APRKGWTLMH  
PGRLLTHYHEG LPTTRGTRYI AVSFVDP

## [ IDENTIFICATION ]

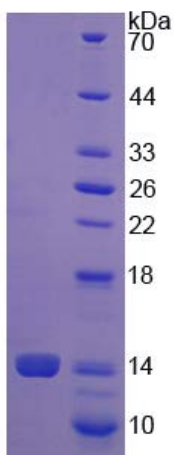


Figure 1. SDS-PAGE

## [ IMPORTANT NOTE ]

The kit is designed for research use only, we will not be responsible for any issue if the kit was used in clinical diagnostic or any other procedures.