



**RPU53754 Human 100µg**  
**OVA Conjugated Carbohydrate Antigen 27.29 (CA27.29)**  
**Organism Species: Homo sapiens (Human)**  
*Instruction manual*

FOR RESEARCH USE ONLY  
NOT FOR USE IN CLINICAL DIAGNOSTIC PROCEDURES

---

---

12th Edition (Revised in Aug, 2016)



## [ PROPERTIES ]

**Source:** Protein Conjugation

**Original Peptide Residues:** Ser540-Ala547

**Purity:** >90%

**Traits:** Freeze-dried powder.

**Buffer formulation:** 10mM PBS, pH7.4.

**Applications:** Immunogen; SDS-PAGE.

## [ USAGE ]

Reconstitute in 10mM PBS (pH7.4) to a concentration of 0.1-1.0 mg/mL. Do not vortex.

## [ STORAGE AND STABILITY ]

**Storage:** Avoid repeated freeze/thaw cycles.

Store at 2-8°C for one month.

Aliquot and store at -80°C for 12 months.

**Stability Test:** The thermal stability is described by the loss rate. The loss rate was determined by accelerated thermal degradation test, that is, incubate the protein at 37°C for 48h, and no obvious degradation and precipitation were observed. The loss rate is less than 5% within the expiration date under appropriate storage condition.

## [ SEQUENCE ]

S APDTRPA



# [ IDENTIFICATION ]

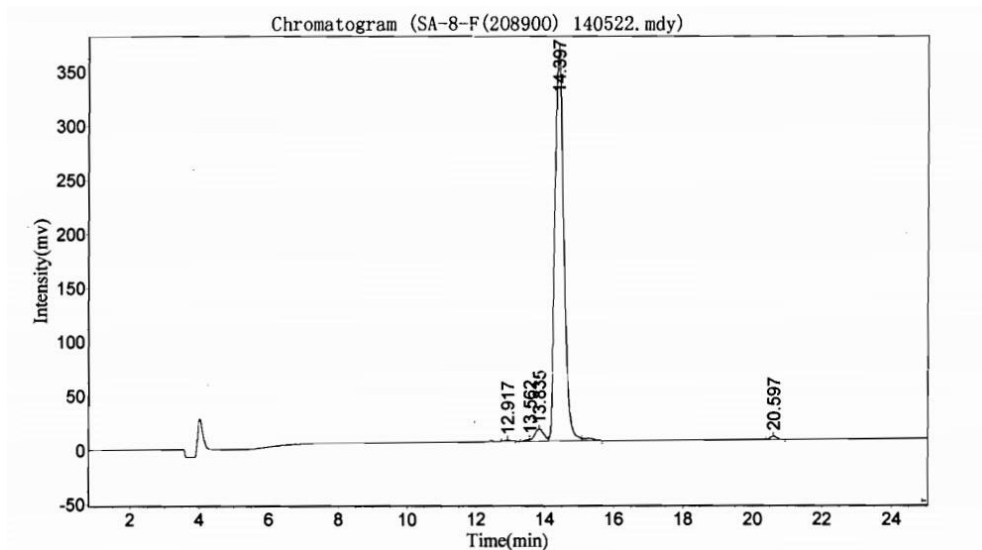


Figure 1. HPLC of the Original Peptide

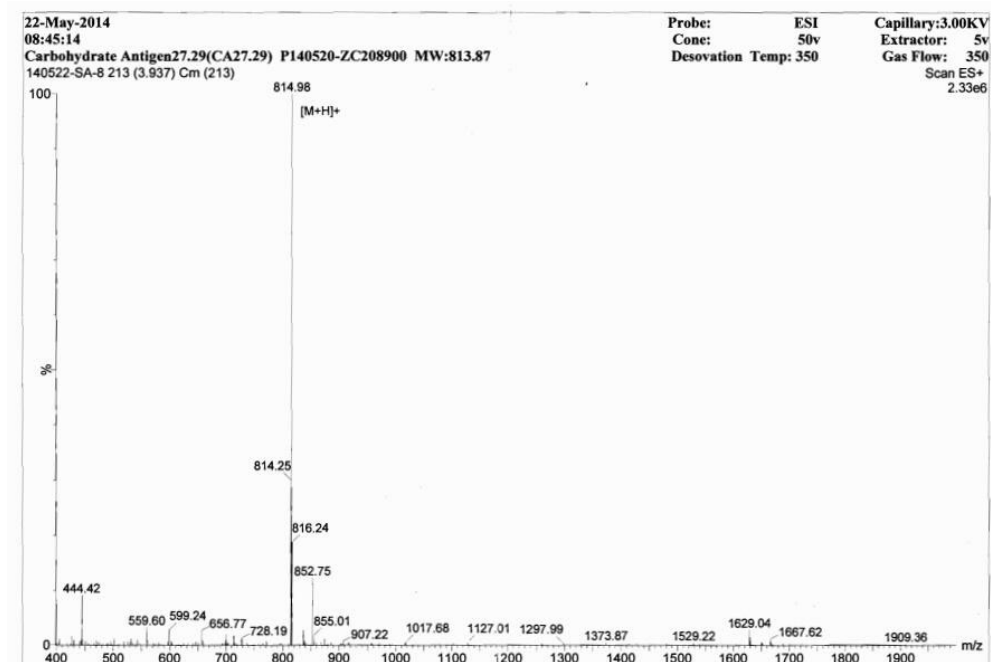


Figure 2. MASS Spectrometry of the Original Peptide