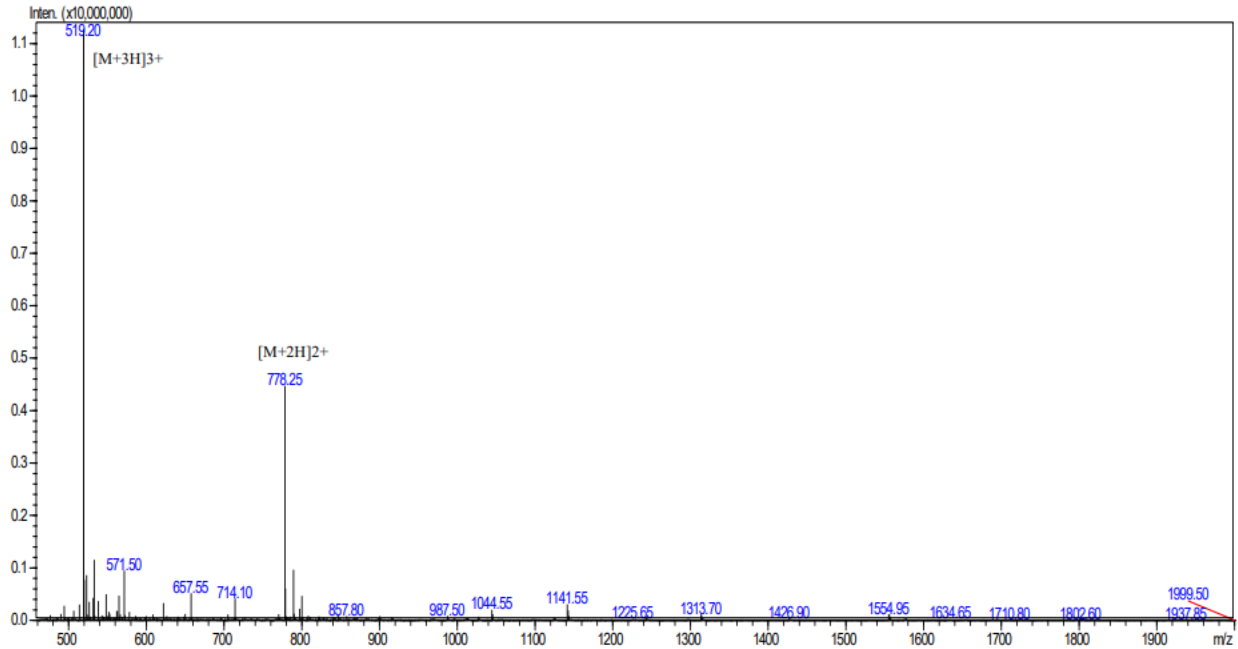


Certificate of Analysis

| | |
|---------------------------|--|
| Date: | 2018-11-02 |
| Order Number: | #SP991225 |
| Product Type: | Chemically synthesized peptide |
| Catalog Number: | 686850 |
| Peptide Name: | Pep45-1 |
| Sequence (N to C): | KIATPGSTSRHSGQK |
| MW: | 1554.71 |
| Salt Form: | Trifluoroacetate (TFA Salt) |
| Quantity: | 5.2mg |
| Suggested Solvent: | 1.0mg peptide soluble in 0.05ml DMSO |
| Lot Number: | P201116-YS846850 |
| Appearance: | White lyophilized powder. |
| Storage: | Store lyophilized peptide at -20°C upon receipt. Reconstitute only the amount of peptide needed for immediate use. |
| Limited Usage: | For Research Use Only. Not for use in diagnostic procedures, or for administration to humans or animals. |

| ASSAY | SPECIFICATION | ACTUAL |
|-------------------------|----------------------|---------------|
| MW by MS | 1554.60 | Conforms |
| Purity by HPLC | >95% | 96.06% |
| Peptide Content | N/A | N/A |
| TFA Content | N/A | N/A |
| Moisture Content | N/A | N/A |

MS REPORT



Acquired by :Shen
 Data Acquired : 2020/11/23
 Injection Volume : 1
 Sample Name : Pep45-1 KK-15
 Mw : 1554.71
 Lot No. : P201116-YS846850

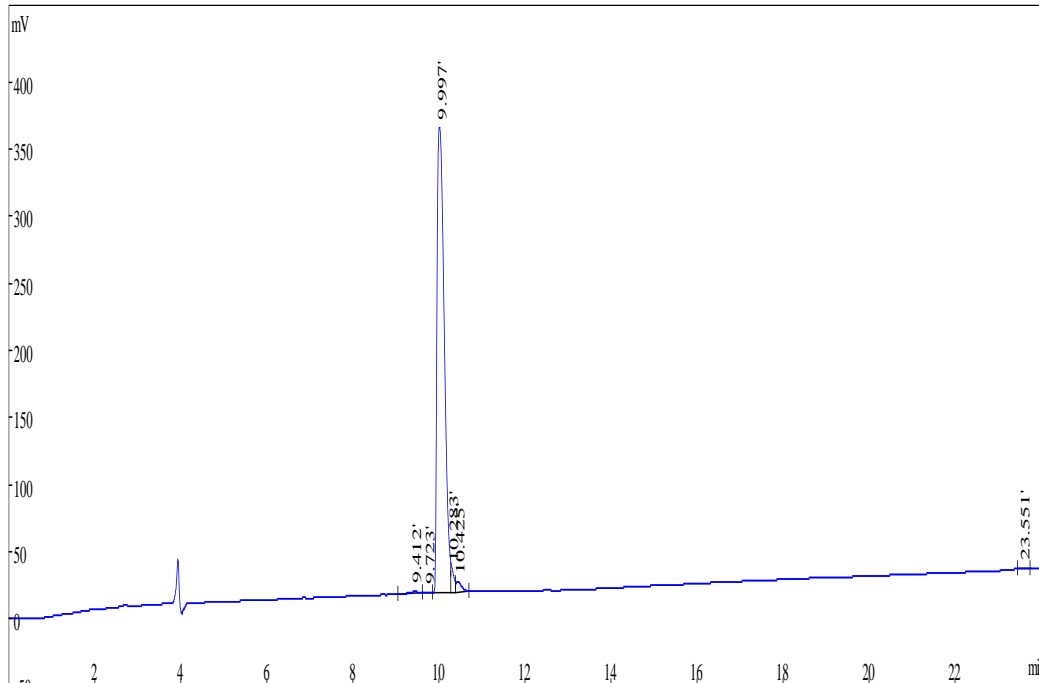
Probe :ESI Probe bias :+4.5kv
 Nebulizer Gas Flow :1.5L/min Detector :1.2kv
 CDL :-20.0v T.Flow :0.2ml/min
 CDL Temp :250°C B.conc :50%H2O/50%ACN
 Block Temp :400°C

HPLC REPORT

Structure: Pep45-1 KK-15
 Lot NO: P201116-YS846850
 Number: 0200049
 Column: 250*4.6mm, Kromasil-C18-5um
 Solvent A: 0.1%TFA in 100%water
 Solvent B: 0.1%TFA in 100%acetonitrile
 Gradient:

| | A | B |
|---------|------|------|
| 0.1min | 91% | 9% |
| 25.0min | 66% | 34% |
| 25.1min | 0% | 100% |
| 30.0min | stop | |

Flow rate: 1.0ml/min
 Wavelength(nm): 220
 Volume: 10ul



| Rank | Time | Conc. | Area | Height |
|--------------|--------|------------|----------------|---------------|
| 1 | 9.412 | 0.6512 | 25241 | 2151 |
| 2 | 9.723 | 0.1715 | 6646 | 814 |
| 3 | 9.997 | 96.06 | 3723108 | 346609 |
| 4 | 10.283 | 1.539 | 59663 | 16543 |
| 5 | 10.425 | 1.513 | 58653 | 7560 |
| 6 | 23.551 | 0.06712 | 2601 | 268 |
| Total | | 100 | 3875912 | 373945 |